

## Human Recombinant PPIL1

<b>CATALOG #:</b>	6317-100	100 µg
<b>ALTERNATE NAMES:</b>	Peptidylprolyl isomerase (cyclophilin)-like 1, Rotamase, CGI-124, CYPL1, hCyPX, PPlase.	
<b>SOURCE:</b>	E.Coli	
<b>PURITY:</b>	> 95% by SDS - PAGE	
<b>MOL. WEIGHT:</b>	19.3 kDa (174 aa – 1-166 aa + His Tag (CT)).	
<b>FORMULATION:</b>	1 mg/ml solution in 20 mM Tris-HCl buffer (pH 8.0) containing 20% glycerol.	

### STORAGE CONDITIONS:

Can be stored at 4°C short term (1-2 weeks). For long term storage, aliquot and store at -20°C or -70°C. Avoid repeated freezing and thawing cycles.

### DESCRIPTION:

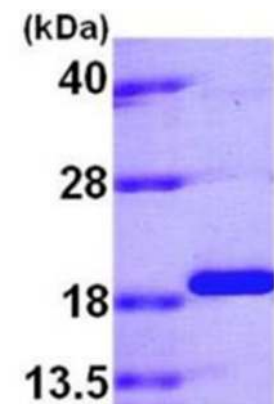
Peptidylprolyl isomerase (cyclophilin)-like 1, also known as PPIL1, is a member of peptidyl-prolyl *cis trans* isomerase (PPlase) family, which catalyzes the *cis-trans* isomerization of proline imidic peptide bonds in oligopeptides and accelerates the folding of proteins. Human PPIL1 might play an important role in proliferation of cancer cells through modulation of phosphorylation of stathmin. So it can be developed as a novel molecular target for colon-cancer therapy.

### AMINO ACID SEQUENCE:

MAAIPDSWQ PPNVYLETSM GIIVLELYWK HAPKTCKNFA ELARRGYNG TKFHRIKDF  
MIQGGDPTGT GRGGASIYKQ QFEDELHPDL KFTGAGILAM ANAGPDTNGS  
QFFVTLAPTQ WLDGKHTIFG RVCQGIGMVN RVGMVETNSQ DRPVDDVKII KAYPSGLEHH  
HHHH

### BIOLOGICAL ACTIVITY:

Specific activity is > 300 nmoles/min/mg, and is defined as the amount of enzyme that cleaves 1 µmole of Suc-AAFP-pNA per minute at 25°C in Tris-HCl pH 8.0 using chymotrypsin.



15% SDS-PAGE (3ug)

Human Recombinant PPIL1

### RELATED PRODUCTS:

- Cyclosporine A (Cat. No. 1522-100, 1G)
- Human Recombinant Cyclophilin B (Cat. No. 6310-100)
- Human Recombinant Cyclophilin A (Cat. No. 6311-100)
- Human Recombinant Cyclophilin D (Cat. No. 6312-100)
- Human Recombinant Cyclophilin H (Cat. No. 6313-100)
- Human Recombinant Cyclophilin E (Cat. No. 6314-100)
- Human Recombinant Cyclophilin F (Cat. No. 6315-100)

**FOR RESEARCH USE ONLY! Not to be used in humans.**