

Human Recombinant MDH2

| | | |
|-------------------------|----------------------------------------------------------------------|-------|
| CATALOG #: | 6356-50 | 50 µg |
| ALTERNATE NAMES: | Malate dehydrogenase 2, NAD (mitochondrial), M-MDH, MDH, MOR1. | |
| SOURCE: | E.Coli | |
| PURITY: | > 95% by SDS - PAGE | |
| MOL. WEIGHT: | 35.2 kDa (335 aa, 25-338 aa + NT His Tag) | |
| FORMULATION: | 1 mg/ml solution in 20 mM Tris-HCl (pH 7.5) containing 10% glycerol. | |

STORAGE CONDITIONS:

Can be stored at 4°C short term (1-2 weeks). For long term storage, aliquot and store at -20°C or -70°C. Avoid repeated freezing and thawing cycles.

DESCRIPTION:

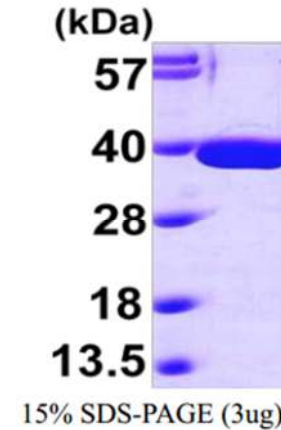
MDH2 catalyzes the reversible oxidation of malate to oxaloacetate, utilizing the NAD/NADH cofactor system in the citric acid cycle. MDH2 is localized to the mitochondria and takes part in the malate-aspartate shuttle that functions in the metabolic coordination between cytosol and mitochondria. MDH2 is highly expressed in the adrenal system, small intestine, heart and pancreas.

AMINO ACID SEQUENCE:

MGSSHHHHHH SSGLVPRGSH MAKVAVLGAS GGIGQPLSLL LKNSPLVSRL TLYDIAHTPG
VAADLSHIET KAAVKGYLGP EQLPDCLKGC DVVVIPAGVP RKPGRTRDDL FNTNATIVAT
LTAACAQHCP EAMICVIANP VNSTIPITAE VFKKHGVYNP NKIFGVTTLD IVRANTFVAE
LKGLDPARVN VPIVGGHAGK TIPLISQCT PKVDFFQDQL TALTGRIQEA GTEVVKAKAG
AGSATLSMAY AGARFVFSLV DAMNGKEGVV ECSFVKSQET ECTYFSTPLL LGKKGIEKNL
GIGKVSSFEE KMISDAIPEL KASIKKGEDF VKTLK

BIOLOGICAL ACTIVITY:

Specific activity is > 30 units/mg, and is defined as the amount of enzyme that cleaves 1 µmole of oxaloacetate and beta-NADH to L-malate and beta-NAD per minute at pH 7.5 at 25°C.



Human Recombinant MDH2

RELATED PRODUCTS:

- Malate assay kit (Cat. No. K637-100)
- Human recombinant MDH1 (Cat. No. 6355-100)
- Bacterial recombinant MDH (Cat. No. 6357-100)

FOR RESEARCH USE ONLY! Not to be used in humans.