

Human Recombinant PKM2

CATALOG #:	6372-100	100 µg
ALTERNATE NAMES:	Pyruvate kinase, muscle isoform M2, CTHBP, THBP1, p58, M2-PK, Tumor M2-PK, PK2, PK3, PKM.	
SOURCE:	E.Coli	
PURITY:	> 95% by SDS - PAGE	
MOL. WEIGHT:	60.1 kDa (551 aa, 1-531 aa + NT His-Tag)	
FORMULATION:	1 mg/ml solution in 20 mM Tris-HCl buffer (pH 8.0) containing 10% glycerol.	

STORAGE CONDITIONS:

Can be stored at 4°C short term (1-2 weeks). For long term storage, aliquot and store at -20°C or -70°C. Avoid repeated freezing and thawing cycles.

DESCRIPTION:

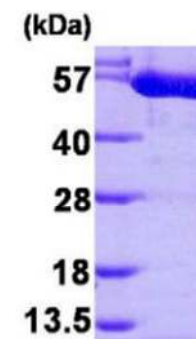
Pyruvate kinase is a key enzyme in the glycolytic pathway. The M2 isoenzyme of pyruvate kinase is specifically expressed at high levels in tumor cells, and can be measured in plasma of patients with advanced breast cancer. The marker is useful for measuring disease activity, sensitivity to chemotherapy and recurrence. PKM2 interacting with Opa proteins, a bacterial outer membrane protein involved in gonococcal adherence to and invasion of human cells, is required for bacterial pathogenesis.

AMINO ACID SEQUENCE:

MGSSHHHHHH SSGLVPRGSH MSKPHSEAGT AFIQTQQLHA AMADTFLEHM
CRLDIDSPPI TARNTGICT IGPASRSVET LKEMIKSGMN VARLNFSHGT HEYHAETIKN
VRTATESFAS DPILYRPVAV ALDTKGPEIR TGLIKGSGTA EVELKKGATL KITLDNAYME
KCDENILWLD YKNICKVVEV GSKIYVDDGL ISLQVKQKGA DFLVTEVENG GSLGSKKGVN
LPGAAVDLPV VSEKDIQDLK FGVEQDVMV FASFIRKASD VHEVRKVLGE KGKNIKIISK
IENHEGVERRF DEILEASDGI MVARGDLGIE IPAQVFLAQ KMMIGRCNRA GKPVICATQM
LESMIKKPRP TRAEGSDVAN AVLDGADCIM LSGETAKGDY PLEAVRMQHL IAREAEAAIY
HLQLFEELRR LAPITSDPTE ATAVGAVEAS FKCCSGAIIV LTKSGRSAHQ VARYRPRAPI
IAVTRNPQTA RQAHLRYGIF PVLCKDPVQE AWAEDVDLRV NFAMNVGKAR GFFKKGDVVI
VLTGWRPGSG FTNTMRVVPV P

BIOLOGICAL ACTIVITY:

Specific activity: > 5.0 unit/mg. One unit will form 1.0 µmol of phosphoenolpyruvate to pyruvate per minute at pH 7.5 at 37°C.



15% SDS-PAGE (3µg)

Human Recombinant PKM2

RELATED PRODUCTS:

- Pyruvate Kinase Activity Assay kit (Cat. No. K709-100)
- Human recombinant PKLR (Cat. No. 6373-50)
- GSK-3b Blocking peptide (Cat. No. 3994BP-50)
- PEPCK-C Blocking peptide (Cat. No. 3949BP-50)

FOR RESEARCH USE ONLY! Not to be used in humans.