

Human Recombinant LDHB

CATALOG #:	6375-100	100 µg
ALTERNATE NAMES:	L-lactate dehydrogenase B chain, LDH-H, TRG-5.	
SOURCE:	E.Coli	
PURITY:	> 95% by SDS - PAGE	
MOL. WEIGHT:	38.8 kDa (354 aa, 1-334 aa + NT His-Tag)	
FORMULATION:	1 mg/ml solution in 20 mM Tris-HCl buffer (pH 8.0) containing 1 mM DTT and 10% glycerol.	

STORAGE CONDITIONS:

Can be stored at 4°C short term (1-2 weeks). For long term storage, aliquot and store at -20°C or -70°C. Avoid repeated freezing and thawing cycles.

DESCRIPTION:

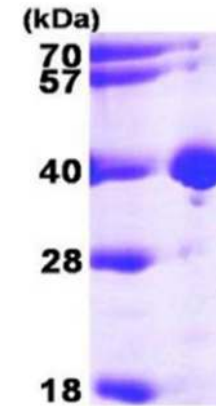
LDHB is part of the lactate dehydrogenase family. LDHB is an oxidoreductase which catalyses the interconversion of pyruvate and lactate with concomitant interconversion of NADH and NAD⁺. LDHB catalyzes the oxidation of hydroxybutyrate, and frequently called Hydroxybutyrate Dehydrogenase (HBD). The LDH family consists of three members, LDH-A, LDH-B and LDH-C. LDHs function as powerful markers for germ cell tumors.

AMINO ACID SEQUENCE:

MGSSHHHHHH SGLVPRGSH MATLKEKLI PVAEEEEATVP NNKITVVGVG QVGMACAISI
LGKSLADELA LVDVLEDKLG GEMMDLQHGS LFLQTPKIVA DKDYSVTANS KIVVVTAGVR
QQEGESRLNL VQRNVNVFKF IIPQIVKYSP DCIIIVVSNP VDILTYVTWK LSGLPKHRVI
GSGCNLDSAR FRYLMAEKLK IHPSSCHGWI LGEHGDSSVA VWSGVNVAGV
SLQELNPEMG TDNSENWKE VHKMVVESAY EVIKLKGYTN WAIGLSVADL IESMLKNLSR
IHPVSTMVKG MYGIENEVFL SLPICLNARG LTVINQKLG DDEVAQLKKS ADTLWDIQKD
LKDL

BIOLOGICAL ACTIVITY:

Specific activity is > 6 units/mg in which one unit will convert 1.0 µmole of pyruvate to L-lactate and β-NAD per minute at pH 7.5 at 37°C.



15% SDS-PAGE (3ug)

Human Recombinant LDHB

RELATED PRODUCTS:

- LDH-Cytotoxicity Assay kit (**Cat. No. K311-400**)
- LDH-Cytotoxicity Assay kit II (**Cat. No. K313-500**)
- Lactate Dehydrogenase (LDH) Activity Assay kit (**Cat. No. K726-500**)
- LDH Antibody (**Cat. No. 3842-500**)
- Human recombinant LDHA (**Cat. No. 6374-100**)

FOR RESEARCH USE ONLY! Not to be used in humans.