

Bacterial Recombinant SurA

CATALOG #:	6381-100	100 µg
ALTERNATE NAMES:	PPlase surA, Rotamase surA, Survival protein A, Chaperone surA.	
SOURCE:	E.Coli	
PURITY:	> 95% by SDS - PAGE	
MOL. WEIGHT:	47.3 kDa (429 aa, 21-428 aa + NT His-Tag)	
FORMULATION:	1 mg/ml solution in 20 mM Tris-HCl buffer (pH 8.0) containing 10% glycerol.	

STORAGE CONDITIONS:

Can be stored at 4°C short term (1-2 weeks). For long term storage, aliquot and store at -20°C or -70°C. Avoid repeated freezing and thawing cycles.

DESCRIPTION:

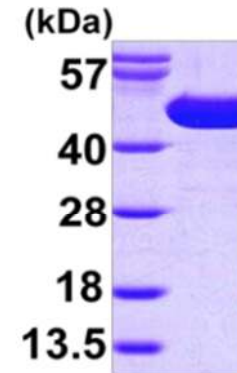
SurA is a periplasmic peptidyl-prolyl isomerase (PPlase) and chaperone of Escherichia coli and other Gram-negative bacteria. This protein is a major factor in the biogenesis of beta-barrel outer membrane proteins (OMPs) and plays an integral role in cell envelope homeostasis and cell envelope functions. It is essential for the survival of E.coli in stationary phase and required for pilus biogenesis.

AMINO ACID SEQUENCE:

MGSSHHHHHH SSGLVPRGSH MAPQVVDKVA AVVNNGVVLE SDVDGLMQSV
KLNAAQARQQ LPDDATLRHQ IMERLIMDQI ILQMGQKMGV KISDEQLDQA IANIAKQNNM
TLDQMRSLA YDGLNYNTYR NQIRKEMIIS EVRNNEVRRR ITILPQEVES LAQQVGNQND
ASTELNLSHI LIPLPENPTS DQVNEAESQA RAVDQARNG ADFGKLAIAH SADQQALNGG
QMGWGRIQEL PGIFAQALST AKKGDIVGPI RSGVGFHILK VNDLRGESKN ISVTEVHARH
ILLKPSPIMT DEQARVKLEQ IAADIKSGKT TFAAAAKEFS QDPGSANQGG DLGWATPDIF
DPAFRDALTR LNKQMSAPV HSSFGWHLIE LLDTRNVDKT DAAQKDRAYR
MLMNRKFSEE AASWMQEQRA SAYVKILSN

BIOLOGICAL ACTIVITY:

Specific activity is > 450 nmoles/min/mg, and is defined as the amount of enzyme that cleaves 1 µmole of Suc-AAFP-pNA per minute at 25°C in Tris-HCl pH 8.0 using chymotrypsin.



15% SDS-PAGE (3µg)

E. Coli Recombinant SurA

RELATED PRODUCTS:

- Cyclosporine A (Cat. No. 1522-100, 1G)
- Human Recombinant Cyclophilin B (Cat. No. 6310-100)
- Human Recombinant Cyclophilin A (Cat. No. 6311-100)
- Human Recombinant Cyclophilin D (Cat. No. 6312-100)
- Human Recombinant Cyclophilin H (Cat. No. 6313-100)
- Human Recombinant Cyclophilin E (Cat. No. 6314-100)
- Human Recombinant Cyclophilin F (Cat. No. 6315-100)
- Human Recombinant PP1L1 (Cat. No. 6317-100)

FOR RESEARCH USE ONLY! Not to be used in humans.