

Human Recombinant PIN4

CATALOG #:	6387-100	100 µg
ALTERNATE NAMES:	Peptidyl-prolyl cis-trans isomerase NIMA-interacting 4 isoform 2, Parvulin-14, Parvulin-17, PPIase Pin4, hEPVH, PAR14, PAR17	
SOURCE:	E.Coli	
PURITY:	> 85% by SDS - PAGE	
MOL. WEIGHT:	18.8 kDa (176 aa, 1-156 aa + NT His Tag)	
FORMULATION:	1 mg/ml solution in 20 mM Tris-HCl buffer (pH 8.0) containing 0.1 mM PMSF, 1 mM DTT and 10% glycerol.	

STORAGE CONDITIONS:

Can be stored at 4°C short term (1-2 weeks). For long term storage, aliquot and store at -20°C or -70°C. Avoid repeated freezing and thawing cycles.

DESCRIPTION:

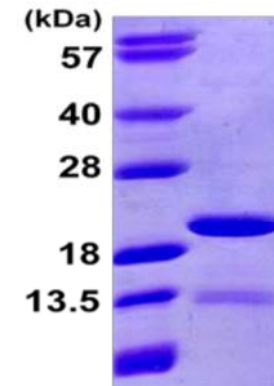
Peptidyl-prolyl cis-trans isomerase NIMA-interacting 4 (PIN4) is a peptidyl-prolyl cis/trans isomerase (PPIase) which interacts with NIMA and is vital for cell cycle regulation. PIN4 has 2 different isoforms: PAR14 and PAR17. Furthermore, Pin4 protein binds to double-stranded DNA under physiological salt conditions.

AMINO ACID SEQUENCE:

MGSSHHHHHH SSGLVPRGSH MPMAGLLKGL VRQLERFSVQ QQASKMPPKG
KSGSGKAGKG GAASGSDSAD KKAQGPKGGG NAVKVRHILC EKHGKIMEAM
EKLKSGMRFN EVAAQYSEDK ARQGGDLGWM TRGSMVGPFG EAAFALPVSG
MDKPVFTDPP VKTKFGYHII MVEGRK

BIOLOGICAL ACTIVITY:

Specific activity is > 300 nmoles/min/mg, and is defined as the amount of enzyme that cleaves 1 µmole of Suc-AAFP-pNA per minute at 25°C in Tris HCl pH 8.0 using chymotrypsin.



15% SDS-PAGE (3ug)

Human Recombinant PIN4

RELATED PRODUCTS:

- PAR4 Antibody (Cat. No. 3447-100)
- PAR4 Blocking Peptide (Cat. No. 3447BP-50)

FOR RESEARCH USE ONLY! Not to be used in humans.