

## Recombinant hSUMO2-Rhodamine

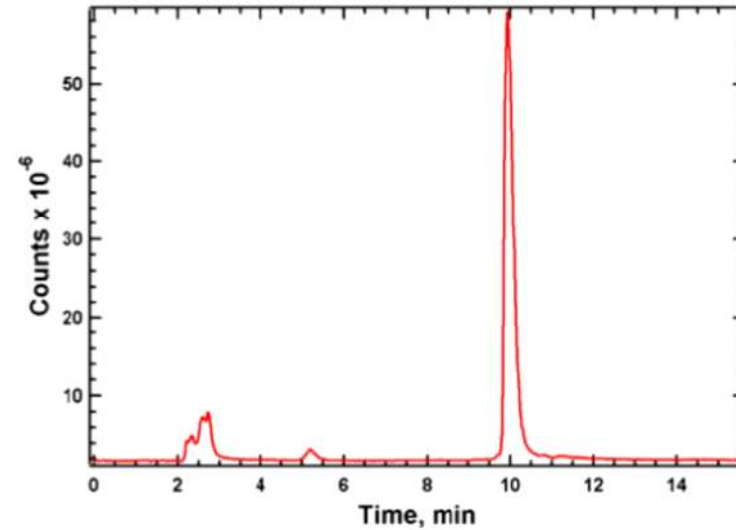
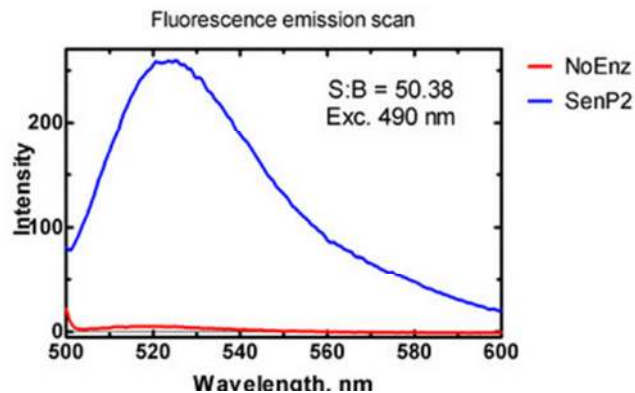
<b>CATALOG #:</b>	6414-50	50 µg
<b>ALTERNATE NAMES:</b>	Small ubiquitin-related modifier 2, SUMO-2, Ubiquitin-like protein SMT3B, SMT3 homolog 2, Sentrin-2, HSMT3, SUMO-3, SUMO2, SMT3B, SMT3H2, MGC117191.	
<b>PURITY:</b>	≥ 95% by RP-HPLC	
<b>MOL. WEIGHT:</b>	10.831 kDa	
<b>FORMULATION:</b>	Lyophilized powder.	
<b>STORAGE CONDITIONS:</b>	Aliquot and store at -80°C. Avoid repeated freezing and thawing cycles.	

### DESCRIPTION:

SUMO2-rhodamine 110 is a quenched fluorescent substrate for desumoylases, e.g. Sentrin protease 1 (SenP1) and SenP2. Cleavage of the amide bond between the C-terminal glycine of human SUMO2 and the fluorophore releases monoglycyl rhodamine 110 resulting in an increase in rhodamine fluorescence at 535 nm (Exc. 485 nm).

### APPLICATIONS:

- Measurement of desumoylase activity.



RP-HPLC of Recombinant hSUMO2-Rhodamine

### RELATED PRODUCTS:

- SUMO1, human recombinant (Cat. No. 4941-100, -1000)
- SUMO2, human recombinant (Cat. No. 4942-100, -1000)
- SUMO3, human recombinant (Cat. No. 4943-100, -1000)
- hSUMO1-AMC (Cat. No. 6412-50)
- hSUMO2-AMC (Cat. No. 6413-50)

**FOR RESEARCH USE ONLY! Not to be used in humans.**