

**GM-CSF, Human CellExp™, human recombinant**

<b>CATALOG #:</b>	6454-10	10 µg
	6454-50	50 µg
<b>ALTERNATE NAMES:</b>	CSF-2, MGI-1GM, GM-CSF, Pluripoietin-alpha, Molgramostin, Sargramostim, MGC131935, MGC138897.	
<b>SOURCE:</b>	Human 293 Cell Expressed	
<b>PURITY:</b>	> 95% by SDS - PAGE	
<b>MOL. WEIGHT:</b>	15 to 36 kDa, monomer, glycosylated	
<b>ENDOTOXIN LEVEL:</b>	< 1.0 EU per 1 µg of protein	
<b>FORMULATION:</b>	Lyophilized from a PBS solution.	
<b>RECONSTITUTION:</b>	Reconstitute in sterile PBS containing 0.1% endotoxin-free, recombinant human serum albumin.	

**STORAGE CONDITIONS:**

Aliquot and store at -20°C or -70°C. Avoid repeated freezing and thawing cycles.

**ADVANTAGES:**

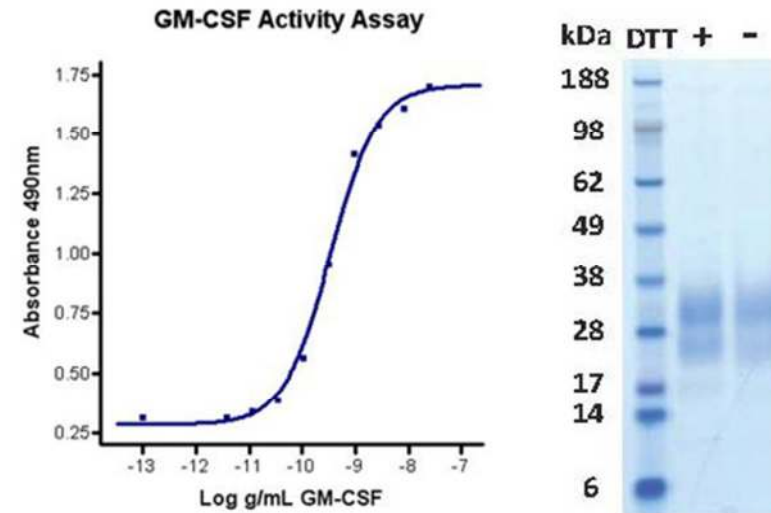
- Animal-derived product free
- High Activity
- Authentic Glycosylation

**DESCRIPTION:**

Granulocyte Macrophage Colony Stimulating Factor (GM-CSF) is a growth factor that supports the in-vitro colony formation of granulocytes-macrophages progenitor cells. It is a pleiotropic cytokine and is produced as a response to immune or inflammatory stimuli by activated cells of the hematopoietic system such as T cells, B cells, macrophages, mast cells, fibroblasts and alveolar epithelial cells. It plays an important role in regulating the proliferation, differentiation, survival and activation of hematopoietic cells such as granulocytes and monocytes, neutrophils, basophiles and eosinophiles, erythroid cells, megakaryocytes and T cells. Human and mouse GM-CSF have about 56% homology and are species specific. Human GM-CSF is not active on mouse cells and vice versa. It is active on canine and feline cells.

**BIOLOGICAL ACTIVITY:**

ED<sub>50</sub> is typically 0.4 to 2 ng/mL. The specific activity was determined by the dose-dependent stimulation of the proliferation of human TF-1 cells (human erythroleukemic Indicator cell line).



Human Cell<sup>exp</sup> Human Recombinant GM-CSF

**RELATED PRODUCTS:**

- Human Cell<sup>exp</sup> Human Recombinant G-CSF (Cat # 6453-10, -50)
- Human Cell<sup>exp</sup> Human Recombinant M-CSF (Cat # 6455-10, -50)
- G-CSF, human recombinant (Cat # 4094-10, -50, -1000)
- G-CSF, murine recombinant (Cat # 4095-10, -50, -1000)
- GM-CSF, murine recombinant (Cat # 4101-10, -100, -1000)
- GM-CSF, Rat recombinant (Cat # 4102-10, -100, -1000)
- G-CSF Antibody (Cat # 5094R-100)
- G-CSF Blocking Peptide (Cat # 5094RBP-50)

**FOR RESEARCH USE ONLY! Not to be used in humans.**