

IL-28B, Human CellExp™, human recombinant

CATALOG #:	6472-10	10 µg
	6472-50	50 µg
ALTERNATE NAMES:	Interleukin-28A, IL-28A, IFN-Lambda 2, Interferon-Lambda 2, Cytokine ZCYTO20, IL28A, IFNL2, ZCYTO20.	
SOURCE:	Human 293 Cell Expressed	
PURITY:	> 95% by SDS - PAGE	
MOL. WEIGHT:	24 kDa, monomer, non-glycosylated	
ENDOTOXIN LEVEL:	< 1.0 EU per 1 µg of protein	
FORMULATION:	Lyophilized in PBS.	
RECONSTITUTION:	Reconstitute in sterile PBS containing 0.1% endotoxin-free recombinant human serum albumin.	
STORAGE CONDITIONS:	Aliquot and store at -20°C or -70°C. Avoid repeated freezing and thawing cycles.	

ADVANTAGES:

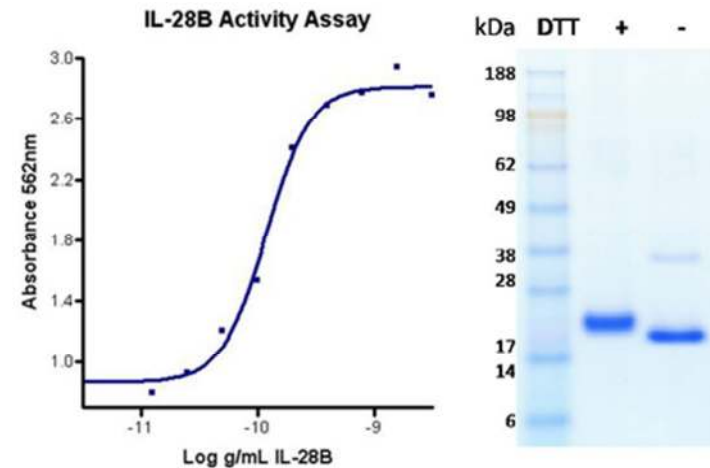
- Animal-derived product free
- High Activity
- Authentic Glycosylation

DESCRIPTION:

IL-28B is a cytokine remotely related to type I interferons and the IL-10 family. Interleukin-28B, interleukin 28A (IL28A), and interleukin 29 (IL29) are 3 closely related cytokine genes which form a cytokine gene cluster on a chromosomal region mapped to 19q13. Expression of the cytokines encoded by these 3 genes can be induced by viral infection. All 3 cytokines interact with a heterodimeric class II cytokine receptor which consists of interleukin 10 receptor, beta (IL10RB) and interleukin 28 receptor, alpha (IL28RA).

BIOLOGICAL ACTIVITY:

ED₅₀ is typically 0.1 to 1 ng/mL. The specific activity was determined by the dose-dependent protection of the cytopathic effect on A549 cells (human lung adenocarcinoma epithelial cell line) that were challenged with encephalomyocarditis (EMC) virus.



Human Cell^{exp} Human Recombinant IL-28B

RELATED PRODUCTS:

- Human Cell^{exp} Human Recombinant IL-28A (Cat # 6471-10, -50)
- IL-28, human recombinant (Cat # 4978-20, -1000)

FOR RESEARCH USE ONLY! Not to be used in humans.