

SCF, Human CellExp™, human recombinant

CATALOG #:	6478-10	10 µg
	6478-50	50 µg
ALTERNATE NAMES:	Kit ligand Precursor, C-kit ligand, SCF, Mast cell growth factor, MGF, SF, KL-1, Kit I, DKFZp686F2250.	
SOURCE:	Human 293 Cell Expressed	
PURITY:	> 95% by SDS - PAGE	
MOL. WEIGHT:	35 to 45 kDa, monomer, glycosylated	
ENDOTOXIN LEVEL:	< 1.0 EU per 1 µg of protein	
FORMULATION:	Lyophilized from PBS.	
RECONSTITUTION:	Reconstitute in sterile PBS containing 0.1% endotoxin-free recombinant human serum albumin.	
STORAGE CONDITIONS:	Aliquot and store at -20°C or -70°C. Avoid repeated freezing and thawing cycles.	

ADVANTAGES:

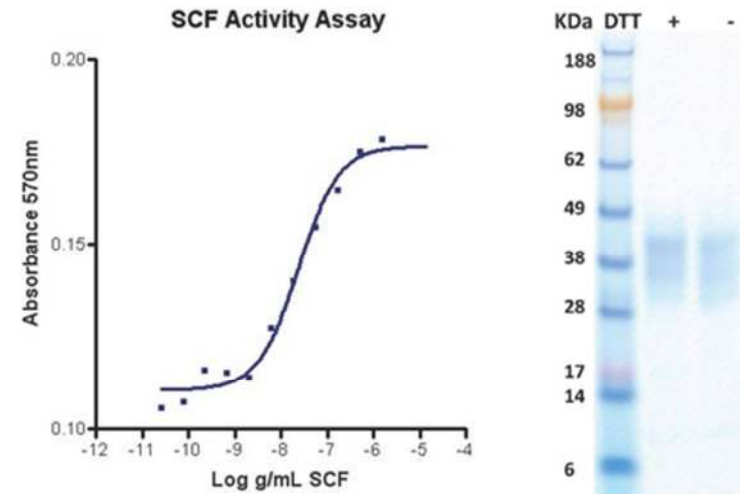
- Animal-derived product free
- High Activity
- Authentic Glycosylation

DESCRIPTION:

Stem cell factor / KIT ligand (SCF) is a cytokine which binds CD117(c-Kit). SCF is also known as "steel factor" or "c-kit ligand". SCF exists in two forms; cell surface bound SCF and soluble (or free) SCF. Soluble SCF is produced by the cleavage of surface bound SCF by metalloproteases. SCF is a growth factor important for the survival, proliferation, and differentiation of hematopoietic stem cells and other hematopoietic progenitor cells. One of its roles is to change the BFU-E (burst-forming unit-erythroid) cells, which are the earliest erythrocyte precursors in the erythrocytic series, into the CFU-E (colony-forming unit-erythroid).

BIOLOGICAL ACTIVITY:

ED₅₀ is typically 5 to 25 ng/mL. The specific activity was determined by the dose-dependent stimulation of the proliferation of human TF-1 cells (human erythroleukemic indicator cell line).

**RELATED PRODUCTS:**

- SCF, human recombinant (Cat # 4327-10, -50, -1000)
- SCF, murine recombinant (Cat # 4328-10, -50, -1000)
- SCF, rat recombinant (Cat # 4329-10, -50, -1000)
- SCF Antibody (Cat # 5327-100)
- SCF Antibody (Cat # 5328-100)
- SCF Antibody (Cat # 5329R-100)

FOR RESEARCH USE ONLY! Not to be used in humans.