

Isorbin™ (Fixed and killed *S. aureus* Protein A positive strain)

CATALOG No:	6505-20	20 ml
	6505-100	100 ml
	6505-1L	1 L
	6505-10L	10 L

FORM:

Lyophilized powder. Reconstitute with 20 ml (100 ml or 1 L) of dH₂O before use. The product will give a 10% (v/v) suspension of fixed and killed *Staphylococcus aureus*, Cowan I strain, in PBS buffer, pH 7.4 containing mannitol as preservative. The reconstituted Isorbin™ should be washed with PBS before applications.

BINDING CAPACITY:

Binding capacity based on absorption of IgG: One ml of the 10% suspension is capable of binding >2.0 mg of rabbit IgG based on the IgG absorption on the Isorbin™.

Binding capacity based on elution of IgG: One ml of the 10% suspension is capable of binding >1.0 mg of rabbit IgG based on the IgG eluted from the Isorbin™.

STORAGE:

Store at 4°C. For longer storage after reconstitution, freeze the product in working aliquots at -20°C. AVOID REPEATED FREEZING AND THAWING. Stable, as supplied, for at least 1 year.

VIABLE CELLS:

Viable cells: ≤2500 cells/ml

APPLICATION:

The strong cell wall of *S. aureus* Protein A strain provides an excellent anchor for active Protein A molecules. After fix and kill, the cells become fine solid particles with active protein A molecules on it. The protein A particles can be used in absorbance and purification of monoclonal and polyclonal antibodies, and immobilizing antibody in immunoprecipitation and co-immunoprecipitation assays.

REMARKS:

Because of the nature of the cell surface and the processing treatment, if it is necessary to elute the bound antibodies (IgG), It is better to use the elution buffer containing high concentration of salt (e.g. 1 M NaCl) for complete elution.

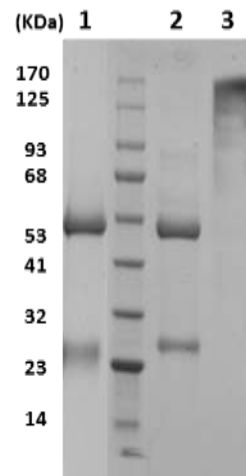


Figure: SDS PAGE of IgG eluted from Isorbin™: 5 µg of the IgG was loaded in each lane. **Lane 1:** Pure IgG bound on Isorbin™ was eluted with elution buffer containing 1 M NaCl. **Lane 2:** IgG from human serum bound on Isorbin™ was eluted with elution buffer containing 1 M NaCl in reducing and non-reducing condition **Lane 3.**

RELATED PRODUCTS:

- Protein A (Liquid form) (Cat. No. 6500)
- Protein A (Lyophilized) (Cat. No. 6500B)
- Protein A Sepharose (Cat. No. 6501)
- Protein A Magnetic Beads (Cat. No. 6507)
- Protein A Sepharose Column (Cat. No. 6508)
- Hi-Bind™ Protein A Agarose (Cat. No. 6520)
- Protein A IgG Binding Buffer (Cat. No. 6524)
- Protein A-Agarose (Cat. No. 6526)
- Protein A Sepharose (Endotoxin-free) (Cat. No. M1300)

FOR RESEARCH USE ONLY! Not to be used on humans.