

Recombinant Protein G

CATALOG #:	6510-1	1 mg
	6510-5	5 mg
	6510-10	10 mg
	6510-100	100 mg
	6510-1000	1 g
	6510-5000	5 g

SOURCE: *E. coli*

SEQUENCE: Amino acid 190-384 of the Streptococcus sp. Protein G Ig binding domains with 6x His-tag on N-terminus. Gene Bank Accession Number CAA27638.

PURITY: >98% by SDS-PAGE and HPLC analyses
Endotoxin level is <0.1 EU/mg of Protein G.

MOL. WEIGHT: 26.1 kDa

FORM: Lyophilized with no additive

RECONSTITUTION: Reconstitution in water to a concentration of 5 mg/ml gives a clear solution.

STORAGE CONDITIONS:

Store at -20°C. After reconstitution, aliquot and store at -20°C. Avoid repeated freezing and thawing. Stable, as supplied, for at least 1 year.

APPLICATIONS:

Protein G binds to the constant region of many species of immunoglobulin G. Protein G can be used to detect, quantify and purify IgG antibodies and antibody/antigen complexes. BioVision's Recombinant Protein G contains only IgG binding domains. The albumin-binding domain as well as cell wall and cell membrane binding domains have been removed to ensure the maximum specific IgG binding capacity. The 6-His-tag on N-terminus can be used for affinity purification or protein G detection using anti-His-tag antibodies.

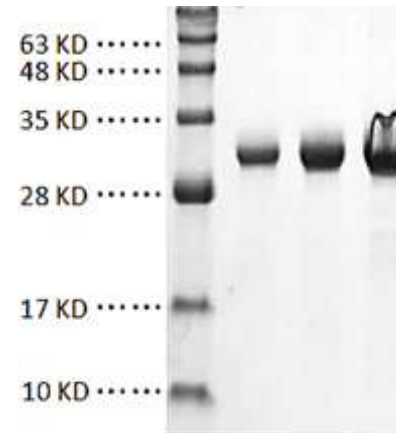
Protein G binds to all IgG subclasses from human, mouse and rat species. It also binds to total IgG from guinea pig, rabbit, goat, cow, sheep, and horse.

SPECIFICITY:

Under optimal conditions, 1 mg protein G will bind approximately 5 mg human IgG. Optimal binding of Protein G to antibodies occurs at pH 5.0 to 6.0 and can be eluted over a pH range of 2.5 to 3.0.

REFERENCES:

1. Benqt Guss et al. (1986) The EMBO Journal. 5:1567-1575.



SDS-PAGE (12%) of Recombinant Protein G:

Lane 1: MW Markers
Lane 2: Protein G (2.2 ug)
Lane 3: Protein G (4.4 ug)
Lane 4: Protein G (8.8 ug)

SDS-PAGE (12%) of Recombinant Protein G: Different amounts of Recombinant Protein G loaded under reducing conditions and stained with Coomassie Blue. The protein has a predicted MW of ~ 26.1 kDa, however, it runs larger on a SDS PAGE gel.

RELATED PRODUCTS:

- Protein A (Liquid Form) (Cat. No. 6500-10, -25, -100, -1000)
- Protein A (Lyophilized) (Cat. No. 6500B-10, -25, -100, -1000)
- Protein A-Agarose (Cat. No. 6526-1, -5, -25, -100)
- Hi-Bind™ Protein A-Agarose (Cat. No. 6520-1, -5, -25, -100)
- Protein A-Sepharose (Cat. No. 6501-1, -5, -25, -100)
- Hi-Bind™ Protein G-Agarose (Cat. No. 6513-1, -5, -25, -100)
- Protein G-Sepharose (Cat. No. 6511-1, -5, -25, -100)
- Protein A/G-Sepharose (Cat. No. 6503-1, -5, -25, -100)
- Protein A/G/L-Sepharose (Cat. No. 6541-1, -5, -25, -100)
- Protein A/G/L (Cat. No. 6540-1, -25, -100, -1000)