

Jacalin

rev. 05/13

Catalog #	6560-5	5 mg
	6560-25	25 mg
	6560-100	100 mg
SOURCE:	Jackfruit seeds.	
PURITY:	≥ 97% by SDS-PAGE. Endotoxin level is < 0.1 EU/mg of Jacalin.	
MOL. WEIGHT:	14.6 kDa (β chain) and 17.1 kDa (full protein).	
THEORETICAL PI:	8.7.	
EXTINCTION COEFFICIENT:	27390 (at 280 nm).	
FORM:	Lyophilized without additives.	
RECONSTITUTION:	Reconstitute in water.	
STORAGE CONDITIONS:	-20°C or below. Stable, as supplied, for at least 1 year.	
BIOBURDEN:	No organisms detected.	

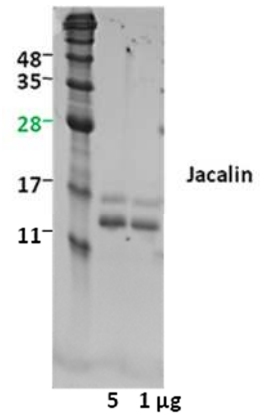
DESCRIPTION: Jacalin is isolated from Jackfruit seeds and purified by affinity chromatography. It is a glycoprotein with two non-covalently bound subunits (14.6 and 17.1 kDa) and belongs to the family of galactose-binding lectins. Jacalin is preferably used in applications to isolate IgA from human serum, isolating human plasma glycoproteins and for applications in histochemistry. BioVision's Jacalin is supplied as a white to light-yellow lyophilized powder without additives. The purity of the lectin is determined by SDS-PAGE, generating two homogeneous bands at 14 kDa and 17 kDa. Gene Bank Accession Number Q38720.

APPLICATIONS:

- To isolate IgA from human serum.
- To isolate human plasma glycoproteins.
- AIDS research.
- For applications in histochemistry.

RELATED PRODUCTS:

- Jacalin Sepharose®
- Recombinant Protein A & Agarose, Sepharose & Magnetic Beads
- Recombinant Protein G & Agarose, Sepharose & Magnetic Beads
- Recombinant Protein L & Sepharose & Magnetic Beads
- Recombinant Protein A/G & Sepharose & Magnetic Beads
- Recombinant Protein A/G/L & Sepharose & Magnetic Beads
- Protein A Polyclonal Antibody
- Protein G Polyclonal Antibody
- Protein L Polyclonal Antibody



Jacalin loaded on a 17% SDS-PAGE gel