

# IL-17E, Human CellExp™, human recombinant

<b>CATALOG #:</b>	7224-10	10 µg
<b>ALTERNATE NAMES:</b>	IL-17E, IL-25, Interleukin-25	
<b>SOURCE:</b>	HEK 293 cells (Tyr 33 - Gly 177)	
<b>PURITY:</b>	≥ 95% by SDS-PAGE gel	
<b>MOL. WEIGHT:</b>	This protein is fused with 6 × His tag at the C-terminus, has a calculated MW of 16.7 kDa. The predicted N-terminus is Tyr 33. DTT-reduced Protein migrates as 24 kDa, 27 kDa and 31 kDa due to different glycosylation.	
<b>ENDOTOXIN LEVEL:</b>	<1 EU/µg by LAL method	
<b>FORM:</b>	Lyophilized	

**FORMULATION:** Lyophilized from 0.22 µm filtered solution in PBS. Generally 5-8% Mannitol or trehalose is added as a protectant before lyophilization.

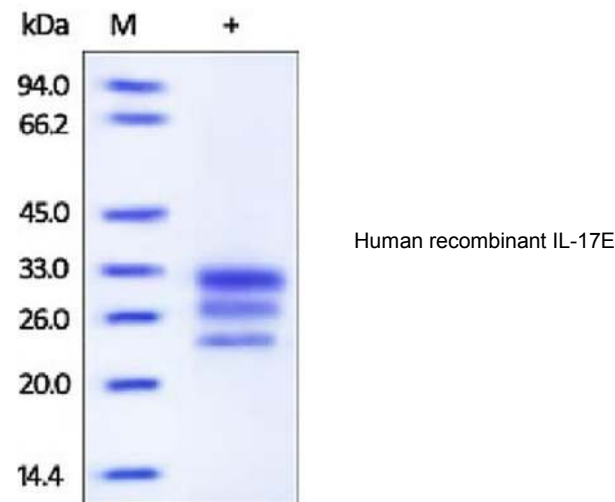
**STORAGE CONDITIONS:** Store at -20°C. After reconstitution, aliquot and store at -20°C and use within 3 months. Avoid repeated freezing and thawing cycles.

**RECONSTITUTION:** Centrifuge the vial prior to opening. Reconstitute in sterile PBS, pH 7.4 to a concentration of 50 µg/ml. Do not vortex. This solution can be stored at 2-8°C for up to 1 month. For extended storage, it is recommended to store at -20°C.

**DESCRIPTION:** Interleukin 25 (IL25) also known as Interleukin-17E (IL-17E), is a distinct member of the IL17 cytokine family comprised of at least six members sharing a conserved cysteine-knot structure but divergent at the N-terminus. IL-25 is secreted by type 2 helper T cells (Th2) and mast cells. IL25 can induce NF-κB activation, and stimulate the production of IL8. Both this cytokine and IL17B are ligands for the cytokine receptor IL17RB. IL-25 induces the production of other cytokines, including IL-4, IL-5 and IL-13 in multiple tissues, which stimulate the expansion of eosinophils. This cytokine is an important molecule controlling immunity of the gut and has been implicated in chronic

inflammation associated with the gastrointestinal tract. IL-25 can kill some types of breast cancer cells.

**BIOLOGICAL ACTIVITY:** The activity is determined by the dose-dependent production of IL-8 by human PBMCs. The expected ED<sub>50</sub> for this effect is 12-25 ng/ml.



## RELATED PRODUCTS:

- Human Cell<sup>exp</sup> Human Recombinant IL-17A (Cat # 6468-10, -50)
- IL-17, murine recombinant (Cat # 4177-10, -1000)
- IL-17A, human recombinant (Cat # 4176-25, -1000)
- IL-17A, rat recombinant (Cat # 4178-25, -1000)
- IL-17A/F, human recombinant (Cat # 4176AF-10, -50, -1000)
- IL-17E, human recombinant (Cat # 4176E-25, -1000)
- IL-17E, murine recombinant (Cat # 4177E-25, -100, -1000)
- IL-17E, rat recombinant (Cat # 4178E-25, -100, -1000)
- IL-17F, human recombinant (Cat # 4176F-25, -1000)
- IL-17F, murine recombinant (Cat # 4177F-25, -100, -1000)
- IL-17F, rat recombinant (Cat # 4178F-25, -100, -1000)
- IL-17 Antibody (Cat # 5176-200)

**FOR RESEARCH USE ONLY! Not to be used in humans.**