

# CCL6, Human CellExp™, mouse recombinant

|                         |  |       |
|-------------------------|--|-------|
| <b>CATALOG #:</b>       | 7226-10  | 10 µg |
| <b>ALTERNATE NAMES:</b> | CCL6, SCYA6, C10, MRP-1  |       |
| <b>SOURCE:</b>          | HEK 293 cells (Gly 22-Ala 116)   |       |
| <b>PURITY:</b>          | ≥ 95% by SDS-PAGE gel  |       |
| <b>MOL. WEIGHT:</b>     | This protein is fused with a C-terminal 6 × His tag, has a calculated MW of 11.4 kDa expressed. The predicted N-terminus is Gly22. Protein migrates as 14 kDa in reduced SDS-PAGE. |       |
| <b>ENDOTOXIN LEVEL:</b> | <1 EU/µg by LAL method   |       |
| <b>FORM:</b>            | Lyophilized  |       |

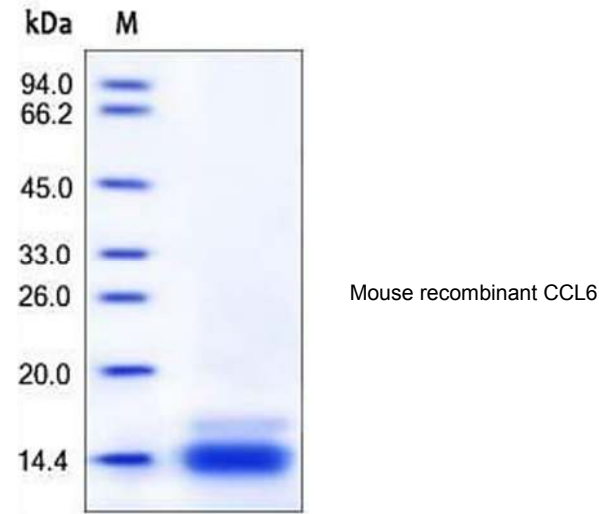
**FORMULATION:** Lyophilized from 0.22 µm filtered solution in PBS. Generally 5-8% Mannitol or trehalose is added as a protectant before lyophilization.

**STORAGE CONDITIONS:** Store at -20°C. After reconstitution, aliquot and store at -20°C and use within 3 months. Avoid repeated freezing and thawing cycles.

**RECONSTITUTION:** Centrifuge the vial prior to opening. Reconstitute in sterile PBS, pH 7.4 to a concentration of 50 µg/ml. Do not vortex. This solution can be stored at 2-8°C for up to 1 month. For extended storage, it is recommended to store at -20°C.

**DESCRIPTION:** Chemokine (C-C motif) ligand 6 (CCL6), a member of the CC chemokine family, was initially identified as a transcript that is induced in bone marrow cells upon stimulation with GM-CSF. CCL6 has only been identified in rodents. A human homologue for mouse CCL6 has not been identified. The mCCL6 cDNA encodes a 116 amino acid residue precursor protein with a hydrophobic signal peptide that is cleaved to yield a 95 amino acid residue mature protein. In mice, CCL6 is expressed in cells from neutrophil and macrophage lineages, where it is strongly induced upon GM-CSF stimulation. Mouse CCL6 expression was also shown to be strongly induced by IL-4 in mouse macrophages and by cytokine IL-13 in mouse lung. Mouse CCL6 is located on chromosome 11. The cell surface receptor for CCL6 is believed to be the chemokine receptor CCR1.

**BIOLOGICAL ACTIVITY:** Measured by its ability to chemoattract BaF3 mouse pro-B cells transfected with human CCR1. The ED<sub>50</sub> for this effect is typically 0.01-0.15 µg/mL.



## RELATED PRODUCTS:

- Exodus-2, human recombinant (Cat. No. 4031-20, -1000)
- Exodus-2, Mouse Recombinant (Cat. No. 7681-20, -100, -1000)
- Eotaxin-2/CCL24, murine recombinant (Cat. No. 7137-10, -50)
- Eotaxin-2/CCL24, human recombinant (Cat. No. 4497-20, -1000)
- Eotaxin/CCL11, human recombinant (Cat. No. 4028-20, -100, -1000)
- Eotaxin/CCL11, murine recombinant (Cat. No. 4029-10, -1000)
- Eotaxin/CCL11 Antibody (Cat. No. 5029-100)

**FOR RESEARCH USE ONLY! Not to be used in humans.**