

# SERPIN A8, Human CellExp™, human recombinant

<b>CATALOG #:</b>	7236-10	10 µg
<b>ALTERNATE NAMES:</b>	Angiotensinogen, SerpinA8, AGT, ANHU	
<b>SOURCE:</b>	HEK 293 cells (Asp 34 - Ala 485)	
<b>PURITY:</b>	≥ 98% by SDS-PAGE gel	
<b>MOL. WEIGHT:</b>	The protein is fused with 6×His tag at the N-terminus, has a calculated MW of 50.6 kDa. The predicted N-terminus is Asp 34. DTT-reduced Protein migrates as 55-60 kDa due to glycosylation.	
<b>ENDOTOXIN LEVEL:</b>	<1 EU/µg by LAL method	
<b>FORM:</b>	Lyophilized	

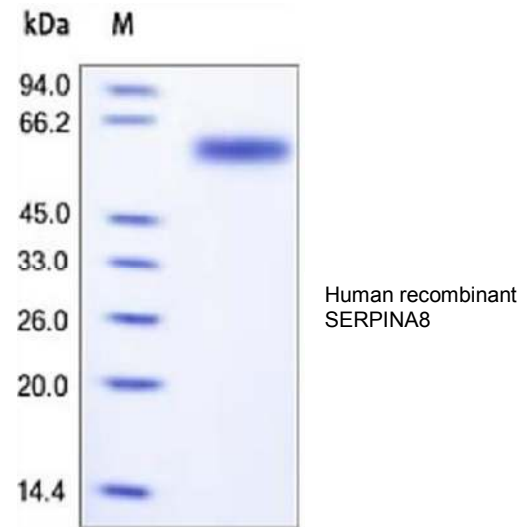
**FORMULATION:** Lyophilized from 0.22 µm filtered solution in PBS. Generally 5-8% Mannitol or trehalose is added as a protectant before lyophilization.

**STORAGE CONDITIONS:** Store at -20°C. After reconstitution, aliquot and store at -20°C and use within 3 months. Avoid repeated freezing and thawing cycles.

**RECONSTITUTION:** Centrifuge the vial prior to opening. Reconstitute in sterile PBS, pH 7.4 to a concentration of 50 µg/ml. Do not vortex. This solution can be stored at 2-8°C for up to 1 month. For extended storage, it is recommended to store at -20°C.

**DESCRIPTION:** Serpin A8 also known as angiotensinogen (AGT), is a member of the serpin family. It is an α-2-globulin that is expressed by the liver and secreted in plasma. As essential component of the renin-angiotensin system (RAS), Angiotensinogen is cleaved into three chains: Angiotensin-1 (Ang I), Angiotensin-2 (Ang II), and Angiotensin-3 (Ang III) in lowered blood pressure by the enzyme renin. Angiotensin-1 is a substrate of ACE (angiotensin converting enzyme) that removes a dipeptide to yield the physiologically active peptide angiotensin-2. Angiotensin-2 acts directly on vascular smooth muscle as a potent vasoconstrictor, affects cardiac contractility and heart rate through its action on the sympathetic nervous system, and alters renal sodium and water absorption through its

ability to stimulate the zona glomerulosa cells of the adrenal cortex to synthesize and secrete aldosterone. Angiotensin-3 stimulates aldosterone release. Defects in AGT are a cause of renal tubular dysgenesis (RTD).



#### RELATED PRODUCTS:

- Serpin E1/PAI-1, human recombinant, (Cat. No. 4731-10, -100, -1000)
- Serpin A6 Antibody (Cat. No. 3906-100)
- Serpin A6 Blocking Peptide (Cat. No. 3906BP-100)
- Neuroserpin, human recombinant, (Cat. No. 7181-10, -50)

**FOR RESEARCH USE ONLY! Not to be used in humans.**