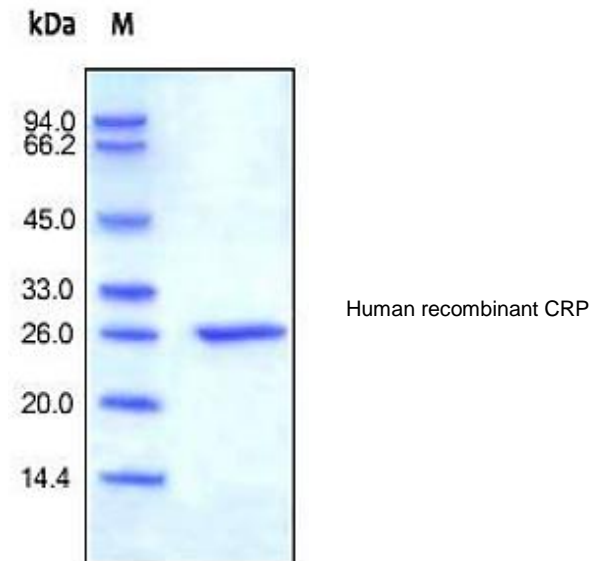


Human CellExp™ C-reactive/CRP, Human Recombinant

CATALOG #:	7242-100	100 µg
ALTERNATE NAMES:	CRP, PTX1, C-reactive protein	
SOURCE:	HEK 293 cells (Phe17 - Pro224)	
PURITY:	≥ 95% by SDS-PAGE gel	
MOL. WEIGHT:	This is a 206 amino acids protein with polyhistidine tag at C-terminus, and has a calculated MW of 24 kDa. The predicted N-terminal is Phe17. DTT-reduced protein migrates as 26 kDa protein.	
ENDOTOXIN LEVEL:	<1 EU/µg by LAL method	
FORM:	Lyophilized	
FORMULATION:	Lyophilized from 0.22 µm filtered solution in Tris-HCl buffer pH 8.0. Generally 5-8% Mannitol or trehalose is added as a protectant before lyophilization.	
STORAGE CONDITIONS:	Store at -20 °C. After reconstitution, aliquot and store at -20 °C and use within 3 months. Avoid repeated freezing and thawing cycles.	
RECONSTITUTION:	Centrifuge the vial prior to opening. Reconstitute in sterile deionized water to a concentration of 200 µg/ml. Solubilize for 30 - 60 min at RT with occasional gentle mixing. Do not vortex.	

DESCRIPTION: C-reactive protein (CRP) is a member of the pentraxin family of proteins that are characterized by a cyclic pentameric structure. Human CRP gene encodes a 224 amino acids precursor. The mature human CRP protein has 206 amino acids that are noncovalently linked to form the pentamer. Human CRP shares 71% and 64% amino acid sequence homology with mouse and rat respectively. CRP, synthesized by hepatocytes, is a major acute phase serum protein in human. IL6, IL1 and glucocorticoids are the major inducer of the CRP gene. The physiological role of CRP is to bind to phosphocholine expressed on the surface of dead or dying cells (and some types of bacteria) in order to activate the complement system. CRP binds to phosphocholine on microbes and damaged cells and enhances phagocytosis by macrophages. Thus, CRP

participates in the clearance of necrotic and apoptotic cells. CRP rises up to 50,000-fold in acute inflammation, such as infection. It rises above normal limits within 6 hours, and peaks at 48 hours. Its half-life is constant, and therefore its level is mainly determined by the rate of production. It has been shown that high levels of CRP in humans is associated with an increased risk of cardiovascular diseases



RELATED PRODUCTS:

- C-Reactive Protein (CRP) (Human) ELISA Kit (**Cat. No. E4289**)
- CRP, human recombinant (**Cat. No. 4863-10, -50, -1000**)
- CRP, human recombinant (**Cat. No. 4864-250, -1000**)
- C-reactive/CRP Monoclonal Antibody (**Cat. No. A1208**)
- CRP Antibody (**Cat. No. 6690**)

FOR RESEARCH USE ONLY! Not to be used in humans.