

Furin/PCSK3, Human CellExp™, human recombinant

CATALOG #:	7249-10	10 µg
ALTERNATE NAMES:	FURIN, FUR, PACE, PCSK3, SPC1	
SOURCE:	HEK 293 cells (Asp 108 - Glu 715)	
PURITY:	≥ 95% by SDS-PAGE gel	
MOL. WEIGHT:	This protein is fused with 6xHis tag at the C-terminus, has a calculated MW of 66.5 kDa. The predicted N-terminus is Asp 108. DTT-reduced Protein migrates as 55-66 kDa.	
ENDOTOXIN LEVEL:	<1 EU/µg by LAL method	
FORM:	Lyophilized	

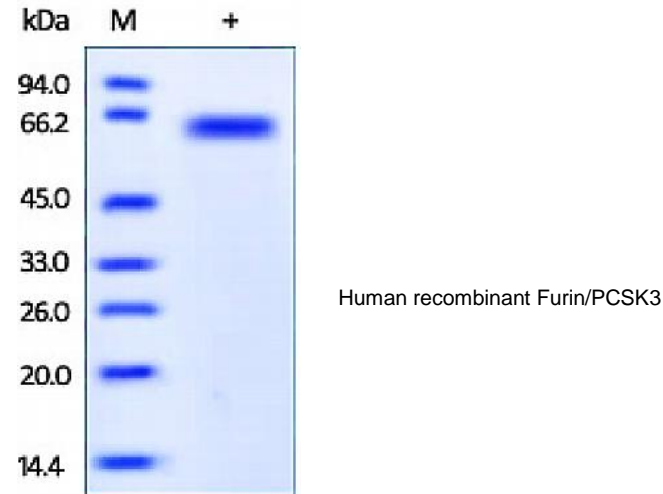
FORMULATION: Lyophilized from 0.22 µm filtered solution in MES, Brij-35. Generally 5-8% Mannitol or trehalose is added as a protectant before lyophilization.

STORAGE CONDITIONS: Store at -20°C. After reconstitution, aliquot and store at -20°C and use within 3 months. Avoid repeated freezing and thawing cycles.

RECONSTITUTION: Centrifuge the vial prior to opening. Reconstitute in sterile PBS, pH 7.4 to a concentration of 50 µg/ml. Do not vortex. This solution can be stored at 2-8°C for up to 1 month. For extended storage, it is recommended to store at -20°C.

DESCRIPTION: Furin also known as paired basic Amino acid Cleaving Enzyme (PACE), is an enzyme which belongs to the subtilisin-like proprotein convertase family. The members of this family are proprotein convertases that process latent precursor proteins into their biologically active products. Furin is enriched in the Golgi apparatus, where it functions to cleave other proteins into their mature/active forms. The expression of furin in T-cells is required for maintenance of peripheral immune tolerance. Furin cleaves proteins just downstream of a basic amino acid target sequence (canonically, Arg-X-(Arg/Lys) - Arg). PACE is a calcium-dependent serine endoprotease that can efficiently cleave precursor proteins at their paired basic amino acid processing sites. In addition to processing cellular precursor proteins, furin is also utilized by a number of pathogens. For

example, the envelope proteins of viruses such as HIV, influenza and dengue fever viruses must be cleaved by furin or furin-like proteases to become fully functional. PACE also play a role in tumor progression.

**RELATED PRODUCTS:**

- Human CellExp™ PCSK9, Human Recombinant (Cat. No. 7265-20)
- Human CellExp™ PCSK9, Murine Recombinant (Cat. No. 7266-20)
- PCSK9 Antibody (Cat. No. 5112-100)

FOR RESEARCH USE ONLY! Not to be used in humans.