

Human CellExp™ IFN-gamma, Human Recombinant

CATALOG #:	7271-10	10 µg
ALTERNATE NAMES:	IFNG, IFG, IFI	
SOURCE:	HEK 293 cells (Gln 24 - Gln 166)	
PURITY:	> 90% by SDS-PAGE	
MOL. WEIGHT:	Calculated MW of 16.8 kDa with no tag. The predicted N-terminus is Gln 24. DTT-reduced protein migrates at 19 to 25 kDa due to glycosylation.	
ENDOTOXIN LEVEL:	< 1.0 EU/µg by LAL method	
FORM:	Lyophilized	
FORMULATION:	Lyophilized from 0.2 µm filtered solution of PBS, pH 7.4, with 10% trehalose	

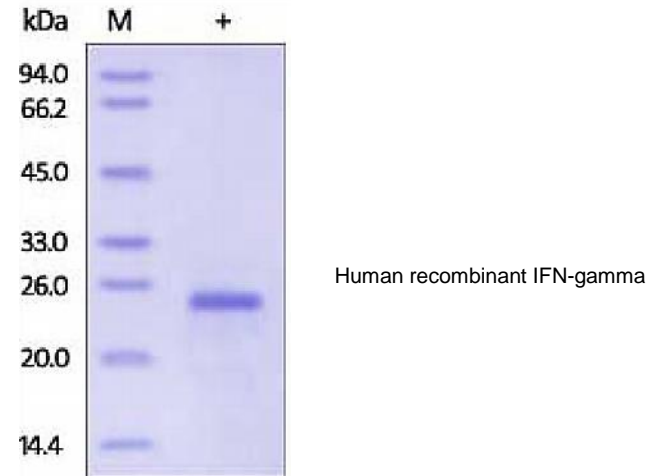
STORAGE CONDITIONS: Store at -20 °C. After reconstitution, aliquot and store at -20 °C and use within 3 months. Avoid repeated freezing and thawing cycles.

RECONSTITUTION: Centrifuge the vial prior to opening. Reconstitute in sterile deionized water to a concentration of 200 µg/ml. Do not vortex. Aliquot and store at -20 °C.

DESCRIPTION: Interferon-gamma (IFN-γ/IFNG) is a dimerized soluble cytokine that is the only member of the type II class of interferon. This interferon was originally called macrophage-activating factor, a term now used to describe a larger family of proteins to which IFN-γ belongs. IFN-gamma has been used in a wide variety of clinical indications. Interferon-gamma (IFN gamma) is a central regulator of the immune response and signals via the Janus Activated Kinase (JAK)-Signal Transducer and Activator of Transcription (STAT) pathway. Interferon gamma has broader roles in activation of innate and adaptive immune responses to viruses and tumors, in part through upregulating transcription of genes involved in cell cycle regulation, apoptosis, and antigen processing/presentation. Despite this, rodent and human trophoblast cells show dampened responses to IFNG that reflect the resistance of these cells to IFNG-mediated activation of major histocompatibility

BIOLOGICAL ACTIVITY:

Measured by its binding ability in functional ELISA. Immobilized IFN-gamma at 5 µg/mL (100 µL/well) can bind Human IFN-gamma R1 with a linear range of 1-10 ng/mL.



RELATED PRODUCTS:

- IFN-λ2, human recombinant (Cat # 7163-10, -50)
- Human Cell^{exp} Human Recombinant IFN-alpha 2b (Cat # 6459-10, -50)
- IFN-alpha 2a, human recombinant (Cat # 4594-20, -100, -1000)
- IFN-alpha 2b, human recombinant (Cat # 4595-20, -100, -1000)
- IFN-alpha 1, human recombinant (Cat # 4596-10, -100, -1000)
- IFN-beta 1b, human recombinant (Cat # 4860-10, -50, -1000)
- IFN-gamma, human recombinant (Cat # 4116-20, -100, -1000)
- IFN-gamma, murine recombinant (Cat # 4117-20, -100, -1000)
- IFN-gamma, rat recombinant (Cat # 4118-50, -100, -1000)
- IFN-gamma Antibody (Cat # 5116-200)
- IFN-gamma Antibody (Cat # 5117-100)
- IFN-alpha Antibody (Cat # 5596-100)
- IFN-alpha Antibody (Cat # 5595R-100)
- IFN-alpha 2b Antibody (Cat # 5595-100)

FOR RESEARCH USE ONLY! Not to be used in humans.