

IL-15, Human CellExp™, human recombinant

CATALOG #:	7273-10	10 µg
ALTERNATE NAMES:	IL-15, IL15, Interleukin-15	
SOURCE:	HEK 293 cells (Asn49 - Ser162)	
PURITY:	≥ 95% by SDS-PAGE gel	
MOL. WEIGHT:	Calculated MW of 12.8 kDa with no tag. The predicted N-terminus is Asn49. DTT-reduced protein migrates as 16 kDa due to glycosylation.	
ENDOTOXIN LEVEL:	<1 EU/µg by LAL method	
FORM:	Lyophilized	

FORMULATION: Lyophilized from 0.22 µm filtered solution in 20 mM Tris, 100 mM NaCl, pH 8.0. Generally 5-8% Mannitol or trehalose is added as a protectant before lyophilization.

STORAGE CONDITIONS: Store at -20°C. After reconstitution, aliquot and store at -20°C and use within 3 months. Avoid repeated freezing and thawing cycles.

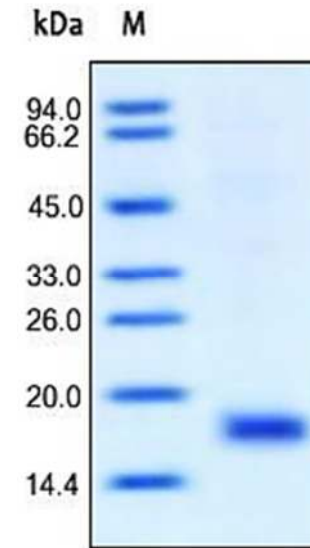
RECONSTITUTION: Centrifuge the vial prior to opening. Reconstitute in sterile deionized water to a concentration of 100 µg/ml. Do not vortex. This solution can be stored at 2-8°C for up to 1 month. For extended storage, it is recommended to store at -20°C.

DESCRIPTION: Interleukin 15, also known as IL15, IL-15, and is a cytokine with structural similarity to IL-2. Like IL-2, IL-15 binds to and signals through the IL-2/IL-15 beta chain (CD122) and the common gamma chain (gamma-C, CD132). IL-15 is secreted by mononuclear phagocytes (and some other cells) following infection by virus (es). This cytokine induces cell proliferation of natural killer cells; cells of the innate immune system whose principal role is to kill virally infected cells. Interleukin 15 (IL-15) regulates T and natural killer (NK) cell activation and proliferation. Survival signals that maintain memory T cells in the absence of antigen are provided by IL-15. This cytokine is also implicated in NK cell development. In rodent lymphocytes, IL-15 prevents apoptosis by inducing an apoptosis inhibitor, BCL2L1/BCL-x (L). IL-15 has been shown to enhance the anti-tumor

safety, dosing, and anti-tumor efficacy of IL-15 in patients with metastatic melanoma and renal cell carcinoma (kidney cancer) has begun to enroll patients at the National Institutes of Health

BIOLOGICAL ACTIVITY:

The bio-activity was determined by dose-dependent stimulation of the proliferation of mouse CTLL-2 cells. The ED₅₀ <0.5ng/ml, corresponding to a specific activity of >2X10⁶ units/mg



Human recombinant IL-15

RELATED PRODUCTS:

- IL-15, human recombinant (Cat # 4170-10, -50, -1000)
- IL-15, murine recombinant (Cat # 4171-10, -1000)
- IL-15, rat recombinant (Cat # 4172-10, -1000)
- IL-15 (human) ELISA Kit (Cat # K4739-100)
- IL-15 Antibody (Cat # 5170-100)
- IL-15 Antibody (Cat # 5171-100)
- IL-15 Antibody (Cat # 5172-100)

FOR RESEARCH USE ONLY! Not to be used in humans.