

Human CellExp™ LAG3 /CD223, Human Recombinant

CATALOG NO: 7278-10 10 µg
7278-50 50 µg

ALTERNATE NAMES: LAG3, CD223, FDC

SOURCE: HEK 293 cells (Val 29 - Leu 450)

PURITY: ≥95% by SDS-PAGE

MOL. WEIGHT: This protein is fused with 6xHis tag at the C-terminus with a calculated MW of 47 kDa. The predicted N-terminus is Val 29. The protein migrates as ~55 kDa under reducing condition (SDS-PAGE) due to glycosylation.



N-terminus

C-terminus

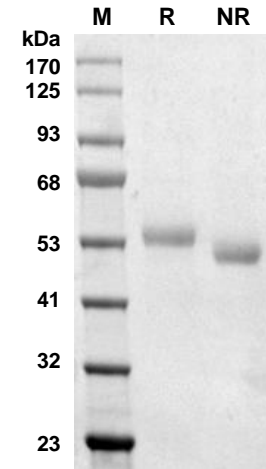
FORM: Lyophilized

FORMULATION: Lyophilized from 0.22 µm filtered PBS (pH 7.4) with 5% trehalose

RECONSTITUTION: Centrifuge the vial prior to opening. Reconstitute in sterile PBS (pH 7.4). Do not vortex.

STORAGE CONDITIONS: Store at -20°C. After reconstitution, aliquot and store at -20°C and use within 3 months. Avoid repeated freeze-thaw cycles.

DESCRIPTION: Lymphocyte activation gene 3 protein (LAG3) is also known as CD antigen CD223 and protein FDC. It belongs to immunoglobulin (Ig) superfamily and contains 4 extracellular Ig-like domains. LAG3/CD223 is one of the inhibitory receptors by negatively regulating cellular proliferation, activation, and homeostasis of T cells. LAG3 can bind to HLA class-II antigens and is involved in lymphocyte activation and autoimmunity. There are now LAG3 targeted therapies both in the clinic and in preclinical development, emphasizing the broad interest in this inhibitory receptor.



SDS-PAGE analyses of Human Recombinant LAG3 expressed from HEK 293 cells: 2 µg Recombinant protein is loaded and run on 4-20% gradient gel under reducing (R) and non-reducing (NR) conditions, then stained with Coomassie Blue.

RELATED PRODUCTS:

- LAG3 (Human) ELISA Kit (**Cat. No. E4552**)
- Anti-CD223 (LAG3) Antibody (**Cat. No. A1067**)
- Human CellExp™ LAG-3/CD223, Cynomolgus Recombinant (**Cat. No. P1179**)
- Human CellExp™ LAG3 / CD223, Fc Tag, human recombinant (**Cat. No. P1149**)

FOR RESEARCH USE ONLY! Not to be used on humans.

