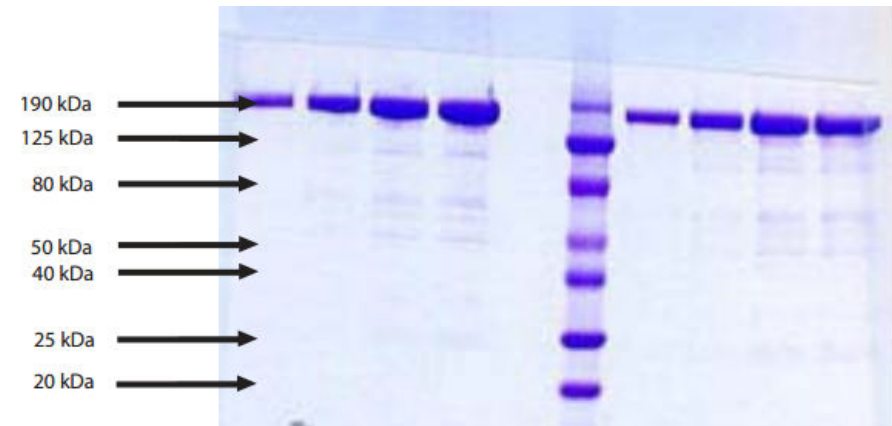


# Alpha 2 Macroglobulin, Human Plasma, Fast Form

<b>CATALOG #:</b>	7297-1000	1 mg
<b>ALTERNATE NAMES:</b>	C3 and PZP-like alpha-2-macroglobulin domain-containing protein 5, A2M, CPAMD5, FWP007	
<b>SOURCE:</b>	Human Plasma. Shown to be non-reactive for HBsAg, anti-HCV, anti-HBc, and negative for anti-HIV 1 & 2 by FDA approved tests.	
<b>PURITY:</b>	≥ 95% by SDS-PAGE	
<b>MOL. WEIGHT:</b>	725 kDa (Homotetramer, Subunit size: 180 kDa)	
<b>EXTINCTION COEFFICIENT:</b>	0.81	
<b>FORM:</b>	Lyophilized	
<b>FORMULATION:</b>	Lyophilized from 100 mM Na Phosphate, pH 7.2.	
<b>STORAGE CONDITIONS:</b>	Store at -20°C or lower. Avoid repeated freezing and thawing cycles.	

**DESCRIPTION:** Alpha 2 Macroglobulin (A2M) is a plasma protease inhibitor which has been shown to exist in two forms. The Slow Form of A2M (S-A2M) is the form which possesses the ability to bind and inhibit proteases by a “trap” method. The Fast Form of A2M (F-A2M) is generated when S-A2M undergoes a conformational change due to either entrapment of a protease in the A2M bait region, or chemical cleavage of an internal thiol ester bond located near the bait region. F-A2M does not possess the ability to bind and inhibit protease activity. F-A2M is rapidly taken up by the liver, with a half-life of 2-4 minutes. In vivo, F-A2M typically represents only 0.17–0.7% of the total A2M in blood plasma of adults. The F-A2M plasma concentration is, however, increased in many disease states including pancreatitis, multiple sclerosis and sepsis. F-A2M has also been implicated in the inhibition of amyloid formation associated with Alzheimer’s disease and spongiform encephalopathy.



## Alpha 2 Macroglobulin, Fast Form, Human Plasma

4-20% Novex Tris-Glycine Gel with 1X Tris-glycine running buffer

1. Alpha 2 Macroglobulin - 2 µg (no heat/reduced)
2. Alpha 2 Macroglobulin - 4 µg (no heat/reduced)
3. Alpha 2 Macroglobulin - 8 µg (no heat/reduced)
4. Alpha 2 Macroglobulin - 10 µg (no heat/reduced)
5. Empty
6. ProSieve Color Protein Markers
7. Alpha 2 Macroglobulin - 2 µg (heated/reduced)
8. Alpha 2 Macroglobulin - 4 µg (heated/reduced)

## RELATED PRODUCTS:

- Alpha 2 Macroglobulin, Human Plasma (Cat. No. 7296-1000)

**FOR RESEARCH USE ONLY! Not to be used in humans.**