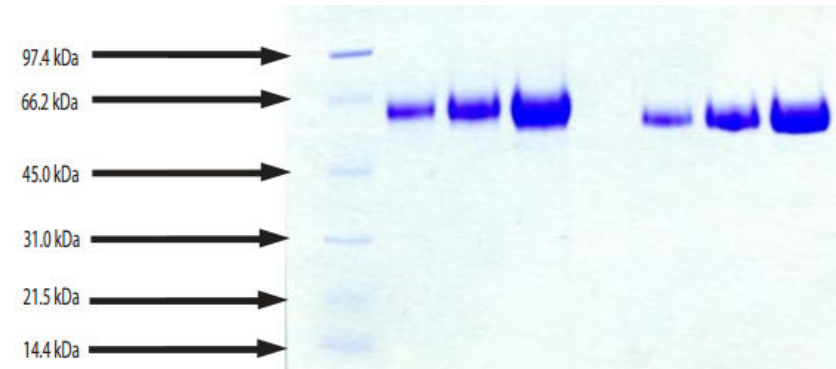


Kininogen, LMW, Human Plasma

CATALOG #:	7301-100	100 µg
ALTERNATE NAMES:	Alpha-2-thiol proteinase inhibitor, Fitzgerald factor, High molecular weight Kininogen, Williams-Fitzgerald-Flaujeac factor, BDK, KNG, Kininogen-1 heavy chain, T-kinin, Bradykinin, Lysyl-bradykinin, Kininogen-1 light chain, Low molecular weight growth-promoting factor	
SOURCE:	Human Plasma. Shown to be non-reactive for HBsAg, anti-HCV, anti-HBc, and negative for anti-HIV 1 & 2 by FDA approved tests.	
PURITY:	≥ 95% by SDS-PAGE	
MOL. WEIGHT:	65 kDa	
EXTINCTION COEFFICIENT:	0.59	
FORM:	Lyophilized	
FORMULATION:	Lyophilized from 10 mM Na acetate, pH 5.5 with 200 mM NaCl	
STORAGE CONDITIONS:	Store at -20°C or lower. Avoid repeated freezing and thawing cycles.	

DESCRIPTION: LMW Kininogen is involved in blood pressure regulation since it is an endogenous protein substrate for tissue kallikrein. Proteolytic cleavage by kallikrein releases vasoactive bradykinin from LMW kininogen. In addition, LMW kininogen, like HMW kininogen, is a major extracellular cysteine protease inhibitor.



Kininogen, LMW, Human Plasma

12% Tris Glycine gel

1. LMW Standard
2. Kininogen, LMW - 5 µg (reduced / heated)
3. Kininogen, LMW - 10 µg (reduced / heated)
4. Kininogen, LMW - 20 µg (reduced / heated)
5. Kininogen, LMW - 5 µg (non-reduced / no heat)
6. Kininogen, LMW - 10 µg (non-reduced / no heat)
7. Kininogen, LMW - 20 µg (non-reduced / no heat)

RELATED PRODUCTS:

- Kininogen, HMW, Human Plasma (**Cat. No. 7300-100**)
- Kallikrein 12 (KLK 12) Antibody (**Cat. No. 3720-100**)
- Kallikrein, Human Plasma (**Cat. No. 4093-50**)
- KLK3 (Kallikrein-3), human plasma (**Cat. No. 4727-20, -100, -1000**)
- Trypsin Activity Colorimetric Assay Kit (**Cat. No. K771-100**)
- Trypsin, Human pancreas (**Cat. No. 7292-50**)
- Alpha 1 Antichymotrypsin, Human Plasma (**Cat. No. 7293-100**)
- Serpin E1/PAI-1, human recombinant, (**Cat. No. 4731-10, -100, -1000**)
- Human CellExp™ SERPINA1 /A1AT, human recombinant, (**Cat. No. 7235-10**)
- Serpin A6 Antibody (**Cat. No. 3906-100**)
- Serpin A6 Blocking Peptide (**Cat. No. 3906BP-100**)
- Neuroserpin, human recombinant, (**Cat. No. 7181-10, -50**)

FOR RESEARCH USE ONLY! Not to be used in humans.