

CCL3L1, human recombinant

CATALOG #: 7305-100 100 µg

ALTERNATE NAMES: C-C motif chemokine 3-like 1, CCL3L3, D17S1718, G0S19-2, LD78, LD78BETA, MIP1AP, SCYA3L; SCYA3L1

SOURCE: E. coli

PURITY: > 90% by SDS-PAGE

MOL. WEIGHT: 10 kDa (90 aa, 26-93 aa + His tag), confirmed by MALDI-TOF.

ENDOTOXIN LEVEL: < 1.0 EU per 1 microgram of protein

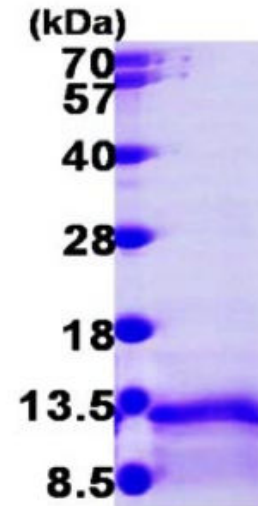
FORM: Liquid

FORMULATION: 0.25 mg/ml in Phosphate Buffered Saline pH 7.4 containing 10% glycerol

STORAGE CONDITIONS: Can be stored at +4°C short term (1-2 weeks). For long term storage, aliquot and store at -20°C or -70°C. Avoid repeated freezing and thawing cycles.

DESCRIPTION: CCL3L1 is a small cytokine belonging to the CC chemokine. This protein is involved in immunoregulatory and inflammatory processes. It binds to several chemokine receptors including chemokine binding protein 2 (CCBP2 or D6) and chemokine (C-C motif) receptor 5 (CCR5). Recombinant human CCL3L1 protein, fused to His-tag at N-terminus, was expressed in E.coli and purified by conventional chromatography, after refolding of the isolated inclusion bodies in a renaturation buffer.

AMINO ACID SEQUENCE: MGSSHHHHHH SSSLVPRGSH MSLAADTPTA
 CCFSYTSRQI PQNFIADYFE TSSQCSKPSV IFLTKRGRQV CADPSEEWVQ
 KYVSDLELSA



15% SDS-PAGE (3µg)

CCL3L1, human recombinant

RELATED PRODUCTS:

- Eotaxin-3/CCL26, human recombinant (Cat. No. 7138-10, -50)
- Eotaxin-2/CCL24, human recombinant (Cat. No. 4497-20, -1000)
- Eotaxin/CCL11, human recombinant (Cat. No. 4028-20, -100, -1000)
- Eotaxin/CCL11, murine recombinant (Cat. No. 4029-10, -1000)
- Eotaxin/CCL11 Antibody (Cat. No. 5029-100)

FOR RESEARCH USE ONLY! Not to be used in humans.

