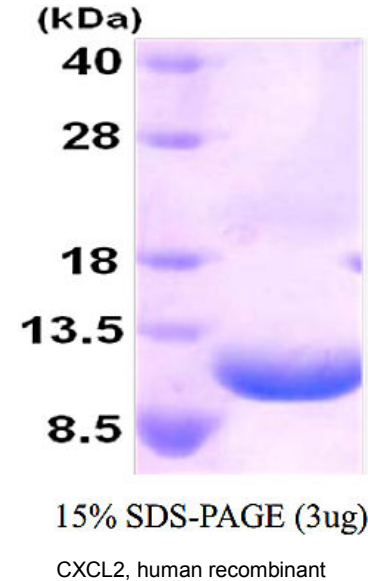


CXCL2, human recombinant

CATALOG #:	7306-100	100 µg
ALTERNATE NAMES:	C-X-C motif chemokines 2, MIP2-alpha, Gro-beta, CINC-2a, GRO2, GROb, MIP2, MIP2A, SCYB2	
SOURCE:	E. coli	
PURITY:	> 95% by SDS-PAGE	
MOL. WEIGHT:	10.1 kDa (94 aa, 35-107 aa + His tag), confirmed by MALDI-TOF.	
ENDOTOXIN LEVEL:	< 1.0 EU per 1 microgram of protein	
FORM:	Liquid	
FORMULATION:	1 mg/ml in 20 mM Tris-HCl buffer (pH 8.0).	
STORAGE CONDITIONS:	Can be stored at 4°C short term (1-2 weeks). For long term storage, aliquot and store at -20°C or -70°C. Avoid repeated freezing and thawing cycles.	

DESCRIPTION: CXCL2 is a small cytokine belonging to the CXC chemokine family that is also known as Chemokine (C-X-C motif) ligand 2, and macrophage inflammatory protein 2-alpha (MIP2-alpha). CXCL2 is secreted by activated monocytes, neutrophils and macrophages and expressed at sites of inflammation. CXCL2 is chemotactic for polymorphonuclear leukocytes and hematopoietic stem cells and suppresses hematopoietic progenitor cell proliferation. Recombinant human CXCL2 protein, fused to His-tag at N-terminus, was expressed in E.coli and purified by using conventional chromatography.

AMINO ACID SEQUENCE: MGSSHHHHHH SSSLVPRGSH MAPLATELRRC
 QCLQTLQGIH LKNIQSVKVK SPGPHCAQTE VIATLKNGQK ACLNPASPMV
 KKIIKMLKN GKSN



RELATED PRODUCTS:

- CXCL16, mouse recombinant (Cat. No. 4353-25, -1000)
- CXCL16, human recombinant (Cat. No. 7130-10, -50)
- CXCL10/IP-10/CRG-2, human recombinant (Cat. No. 4277-10, -50, -1000)
- CXCL14/BRAK, human recombinant (Cat. No. 4278-10, -50, -1000)
- CXCL14/BRAK, human recombinant (Cat. No. 4278-10, -50, -1000)
- CTGF, human recombinant (Cat. No. 4702-20, -100, -1000)
- CTGF Antibody (Cat. No. 5553R-100)
- SDF-1 beta/CXCL12, feline recombinant (Cat # 4389-10, -100, -1000)
- SDF-1alpha (CXCL12), human recombinant (Cat # 4387-10, -100, -1000)
- SDF-1alpha (CXCL12), murine recombinant (Cat # 4388-10, -100, -1000)
- SDF-1beta (CXCL12), human recombinant (Cat # 4390-10, -100, -1000)
- SDF-1beta (CXCL12), murine recombinant (Cat # 4391-10, -100, -1000)

FOR RESEARCH USE ONLY! Not to be used in humans.

