

CD1E, human recombinant

TCPRFLAGLM EAGESELKRK VKPEAWLSCG PSPGPGRLQL VCHVSGFYPK
 PVWVMWMRGE QEQRGTQRGD VLPNADETWY LRATLDVAAG EAAGLSCRVK
 HSSLGGHDLI IHWGGYS

CATALOG #: 7308-100 100 µg

ALTERNATE NAMES: T-cell surface glycoprotein CD1e, CD1A, R2

SOURCE: E. coli

PURITY: > 85% by SDS-PAGE

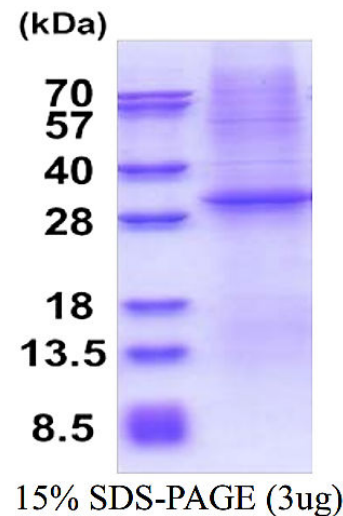
MOL. WEIGHT: 33.1 kDa (297 aa, 32-305 aa + His tag), confirmed by MALDI-TOF.

ENDOTOXIN LEVEL: < 1.0 EU per 1 µg of protein

FORM: Liquid

FORMULATION: 1 mg/ml in 20 mM Tris-HCl buffer (pH 8.0) containing 10% glycerol, 0.4M Urea

STORAGE CONDITIONS: Can be stored at 4°C short term (1-2 weeks). For long term storage, aliquot and store at -20°C or -70°C. Avoid repeated freezing and thawing cycles.



CD1E, human recombinant

DESCRIPTION: CD1E is a member of the CD1 family of transmembrane glycoproteins, which are structurally related to the major histocompatibility complex (MHC) proteins and form heterodimers with beta-2-microglobulin. The CD1 proteins mediate the presentation of primarily lipid and glycolipid antigens of self or microbial origin to T cells. The human genome contains five CD1 family genes organized in a cluster on chromosome 1. The CD1 family members are thought to differ in their cellular localization and specificity for particular lipid ligands. CD1E localizes within Golgi compartments, endosomes, and lysosomes, and is cleaved into a stable soluble form. The soluble form is required for the intracellular processing of some glycolipids into a form that can be presented by other CD1 family members. Recombinant human CD1E protein, fused to His-tag at N-terminus, was expressed in E.coli.

AMINO ACID SEQUENCE: MGSSHHHHHH SSGLVPRGSH MGSEEQLSFR
 MLQTSFANH SWAHSEGS GW LGDLQTHGWD TVLGTIRFLK PWSHGNSFKQ
 ELKNLQSLFQ LYFHSFIQIV QASAGQFQLE YPFEIQILAG CRMNAPQIFL
 NMA YQGSDFL SFQGISWEPS PGAGIRAQNI CKVLNRYLDI KEILQSL LGH

RELATED PRODUCTS:

- CD200, human recombinant (Cat. No. 7309-100)
- CD226, human recombinant (Cat. No. 7310-100)
- CD274, mouse recombinant (Cat. No. 7311-100)
- CD300C, human recombinant (Cat. No. 7312-100)
- CD3G, human recombinant (Cat. No. 7313-100)
- CD46, human recombinant (Cat. No. 7314-100)
- CD5, human recombinant (Cat. No. 7315-100)
- CD7, human recombinant (Cat. No. 7316-100)
- CD74, human recombinant (Cat. No. 7317-100)
- CD79B, human recombinant (Cat. No. 7318-100)
- CD84, human recombinant (Cat. No. 7319-100)
- CD8B, human recombinant (Cat. No. 7320-100)

FOR RESEARCH USE ONLY! Not to be used in humans.

