

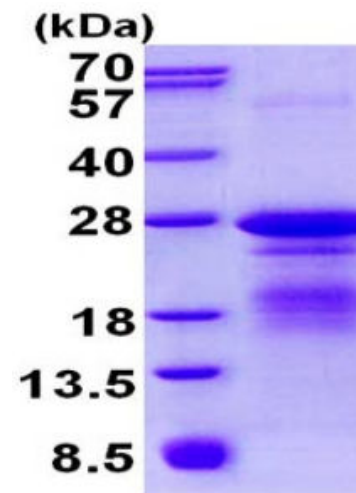
# TREM1, human recombinant

<b>CATALOG #:</b>	7332-100	100 µg
<b>ALTERNATE NAMES:</b>	Triggering receptor expressed on myeloid cells 1, CD354, TREM-1	
<b>SOURCE:</b>	E. coli	
<b>PURITY:</b>	> 85% by SDS-PAGE	
<b>MOL. WEIGHT:</b>	23.3 kDa (209 aa, 21-205 aa + His Tag), confirmed by MALDI-TOF.	
<b>ENDOTOXIN LEVEL:</b>	< 1.0 EU per 1 µg of protein	
<b>FORM:</b>	Liquid	
<b>FORMULATION:</b>	0.5 mg/ml in 20 mM Tris-HCl buffer (pH 8.0) containing 0.15 M NaCl, 30% glycerol and 1 mM DTT.	

**STORAGE CONDITIONS:** Can be stored at 4°C short term (1-2 weeks). For long term storage, aliquot and store at -20°C or -70°C. Avoid repeated freezing and thawing cycles.

**DESCRIPTION:** TREM1 is a receptor belonging to the Ig super family that is expressed on myeloid cells. This protein amplifies neutrophil and monocyte-mediated inflammatory responses triggered by bacterial and fungal infections by stimulating release of pro-inflammatory chemokines and cytokines, as well as increased surface expression of cell activation markers. Alternatively spliced transcript variants encoding different isoforms have been noted for this gene. Recombinant human TREM1 protein, fused to His-tag at N-terminus, was expressed in E.coli and purified by using conventional chromatography techniques.

**AMINO ACID SEQUENCE:** MGSSHHHHHH SGLVPRGSH MGSM ATKLTE  
 EKVELKEGQT LDVKCDYTLK KFASSQKAWQ IIRDGEMPKT LACTERPSKN  
 SHPVQVGRIL LEDYHDHGLL RVRMVNLQVE DSGLYQCVIY QPPKEPHMLF  
 DRIRLVVTKG FSGTPGSNEN STQNVIKIPP TTKALCPLY TSPRTVTQAP  
 PKSTADVSTP DSEINLTNVT DIIRVPVFN



15% SDS-PAGE (3µg)

TREM1, human recombinant

**RELATED PRODUCTS:**

- CD4 (RPA-T4) FITC Antibody (Cat. No. 6254-25)
- CD4 (RPA-T4) PE Antibody (Cat. No. 6255-25)
- CD4 (RPA-T4) APC Antibody (Cat. No. 6256-25)
- CD2 (RPA-2.10) Alexa Fluor® 647 Antibody (Cat. No. 6251-25)
- CD2 (RPA-2.10) Alexa Fluor® 488 Antibody (Cat. No. 6252-25)
- CD28 (CB28) Alexa Fluor® 488 Monoclonal Antibody (Cat. No. 6178-25)
- CD28 (CB28) PE Monoclonal Antibody (Cat. No. 6179-25)
- CD20 (B9E9) Alexa Fluor® 488 Monoclonal Antibody (Cat. No. 6175-25)
- CD20 (Clone B9E9) PE Monoclonal Antibody (Cat. No. 6176-25)
- CD40 Antibody (Cat. No. 3072-100)
- CD40L Antibody (Clone 2A12A7) (Cat. No. 5015-100)

**FOR RESEARCH USE ONLY! Not to be used in humans.**

