

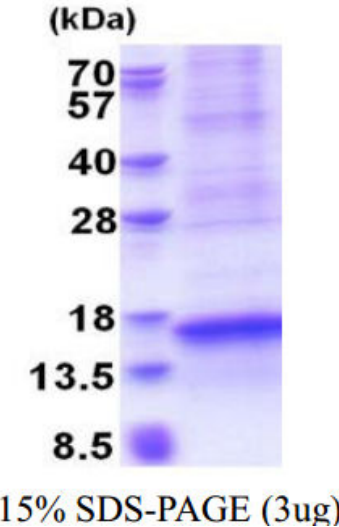
## CXCL17, human recombinant

<b>CATALOG #:</b>	7345-50	50 µg
<b>ALTERNATE NAMES:</b>	Chemokine (C-X-C motif) ligand 17, Dcip1, DMC, MGC138300, UNQ473, VCC-1, VCC1	
<b>SOURCE:</b>	E. coli	
<b>PURITY:</b>	> 85% by SDS-PAGE	
<b>MOL. WEIGHT:</b>	13.7 kDa (119 aa, 22-119 aa + His Tag), confirmed by MALDI-TOF.	
<b>FORM:</b>	Liquid	
<b>FORMULATION:</b>	0.5 mg/ml in 20 mM Tris-HCl buffer (pH 8.0) containing 0.4 M Urea and 10% glycerol.	

**STORAGE CONDITIONS:** Can be stored at 4°C short term (1-2 weeks). For long term storage, aliquot and store at -20°C or -70°C. Avoid repeated freezing and thawing cycles.

**DESCRIPTION:** Chemokine (C-X-C motif) ligand 17, also known as CXCL17, is a small cytokine belonging to the CXC chemokine family. CXCL17 is a 119 amino acid secreted protein that plays a role in angiogenesis. CXCL17 is expressed in skeletal muscle, trachea, lung, intestine and stomach, and is upregulated in duodenal mucosa of patients with acute cholera, as well as breast tumors. CXCL17 is considered a housekeeping chemokine for the movement of immature dendritic cells and non-activated blood monocytes into tissues, and is thought to be involved in the innate immune response. Recombinant human CXCL17 protein, fused to His-tag at N-terminus, was expressed in E.coli.

**AMINO ACID SEQUENCE:** MGSSHHHHHH SGLVPRGSH MSSLNPGVAR  
GHRDRGQASR RWLQEGGQEC ECKDWFLRAP RRFMTVSGL PKKQCPCDHF  
KGNVKKTRHQ RHHRKPNKHS RACQQFLKQC QLRSFALPL



CXCL17, human recombinant

### RELATED PRODUCTS:

- CXCL16, mouse recombinant (Cat. No. 4353-25, -1000)
- CXCL16, human recombinant (Cat. No. 7130-10, -50)
- CXCL10/IP-10/CRG-2, human recombinant (Cat. No. 4277-10, -50, -1000)
- CXCL14/BRAK, human recombinant (Cat. No. 4278-10, -50, -1000)
- CXCL14/BRAK, human recombinant (Cat. No. 4278-10, -50, -1000)
- CTGF, human recombinant (Cat. No. 4702-20, -100, -1000)
- CTGF Antibody (Cat. No. 5553R-100)
- SDF-1 beta/CXCL12, feline recombinant (Cat # 4389-10, -100, -1000)
- SDF-1alpha (CXCL12), human recombinant (Cat # 4387-10, -100, -1000)
- SDF-1alpha (CXCL12), murine recombinant (Cat # 4388-10, -100, -1000)
- SDF-1beta (CXCL12), human recombinant (Cat # 4390-10, -100, -1000)
- SDF-1beta (CXCL12), murine recombinant (Cat # 4391-10, -100, -1000)

**FOR RESEARCH USE ONLY! Not to be used in humans.**