

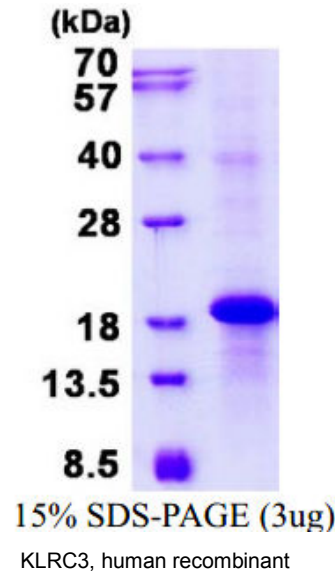
## KLRC3, human recombinant

<b>CATALOG #:</b>	7354-100	100 µg
<b>ALTERNATE NAMES:</b>	Killer cell lectin-like receptor subfamily C, NKG2-E; NKG2E	
<b>SOURCE:</b>	E. coli	
<b>PURITY:</b>	> 90% by SDS-PAGE	
<b>MOL. WEIGHT:</b>	19 kDa (171 aa, 94-240 aa + His Tag), confirmed by MALDI-TOF.	
<b>FORM:</b>	Liquid	
<b>FORMULATION:</b>	1 mg/ml in 20 mM Tris-HCl buffer (pH 8.0) containing 0.4 M NaCl and 10% glycerol.	

**STORAGE CONDITIONS:** Can be stored at 4°C short term (1-2 weeks). For long term storage, aliquot and store at -20°C or -70°C. Avoid repeated freezing and thawing cycles.

**DESCRIPTION:** KLRC3 is a member of the NKG2 group which are expressed primarily in natural killer (NK) cells and encodes a family of transmembrane proteins characterized by a type II membrane orientation (extracellular C terminus) and the presence of a C-type lectin domain. The NKG2 gene family is located within the NK complex, a region that contains several C-type lectin genes preferentially expressed on NK cells. Recombinant human KLRC3 protein, fused to His-tag at N-terminus, was expressed in E.coli.

**AMINO ACID SEQUENCE:** MGSSHHHHHH SSGLVPRGSH MGSM IPFLEQ  
NNSSPNTRTQ KARPCGHCPE EWITYSNSCY YIGKERRTWE ESLQACASKN  
SSLLSIDNE EEMKFLASIL PSSWIGVFRN SSHHPWVTIN GLAFKHEIKD  
SDHAERNCAM LHVRGLISDQ CGSSRIIRRG FIMLTRLVLN S



### RELATED PRODUCTS:

- KLRB1, Human Recombinant (Cat # 7352-100)
- KLRC2, Human Recombinant (Cat # 7353-50)
- KLRG1, Human Recombinant (Cat # 7355-50)
- KLRK1, Human Recombinant (Cat # 7356-100)

**FOR RESEARCH USE ONLY! Not to be used in humans.**