

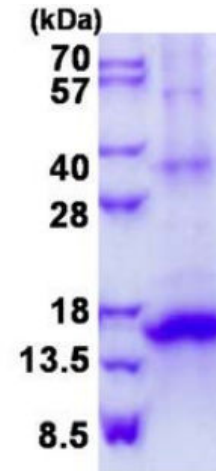
KLRG1, human recombinant

CATALOG #:	7355-50	50 µg
ALTERNATE NAMES:	Killer cell lectin-like receptor subfamily G member 1, 2F1, CLEC15A, MAFA, MAFA-2F1, MAFA-L, MAFA-LIKE	
SOURCE:	E. coli	
PURITY:	> 85% by SDS-PAGE	
MOL. WEIGHT:	17 kDa (153 aa, 60-189 aa + His Tag), confirmed by MALDI-TOF.	
FORM:	Liquid	
FORMULATION:	0.5 mg/ml in 20 mM Tris-HCl buffer (pH 8.0) containing 0.4 M Urea and 10% glycerol.	

STORAGE CONDITIONS: Can be stored at 4°C short term (1-2 weeks). For long term storage, aliquot and store at -20°C or -70°C. Avoid repeated freezing and thawing cycles.

DESCRIPTION: KLRG1 belongs to the killer cell lectin-like receptor (KLR) family, which is a group of transmembrane proteins preferentially expressed in NK cells. Natural killer (NK) cells are lymphocytes that can mediate lysis of certain tumor cells and virus-infected cells without previous activation. They can also regulate specific humoral and cell-mediated immunity. Cell surface expression of KLRG1 is up-regulated by expression of MHC class I molecules. Recombinant human KLRG1 protein, fused to His-tag at N-terminus, was expressed in E.coli.

AMINO ACID SEQUENCE: MGSSHHHHHH SSGLVPRGSH MGSLCQGSNY
STCASCPCP DRWMKYGNHC YYFSVEEKDW NSSLEFCLAR DSHLLVITDN
QEMSLQVFL SEAFCWIGLR NNSGWRWEDG SPLNFSRISS NSFVQTCGAI
NKNGLQASS EVPLHWVCK VRL



15% SDS-PAGE (3µg)

KLRG1, human recombinant

RELATED PRODUCTS:

- KLRB1, Human Recombinant (Cat # 7352-100)
- KLRC2, Human Recombinant (Cat # 7353-50)
- KLRC3, Human Recombinant (Cat # 7354-100)
- KLRK1, Human Recombinant (Cat # 7356-100)

FOR RESEARCH USE ONLY! Not to be used in humans.