

Human CellExp™ CD273 / B7-DC / PD-L2, human recombinant

CATALOG #: 7369-10 10 µg
7369-50 50 µg

ALTERNATE NAMES: PDL2, PD-L2, Butyrophilin B7-DC, CD273, PDCD1 ligand 2, PDCD1L2, PDCD1LG2

SOURCE: HEK 293 cells (Leu 20 - Pro 219)

PURITY: ≥ 95% by SDS-PAGE gel

MOL. WEIGHT: This protein is fused with polyhistidine tag at the C-terminus, has a calculated MW of 23.4 kDa. The predicted N-terminus is Leu 20. DTT-reduced Protein migrates as 35-48 kDa due to glycosylation.

ENDOTOXIN LEVEL: <1 EU/µg by LAL method

FORM: Lyophilized

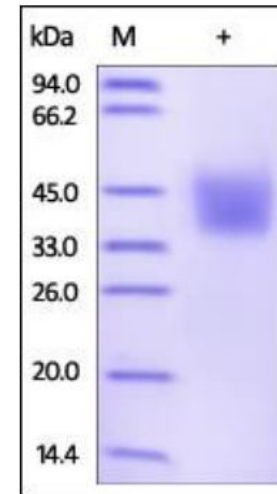
FORMULATION: Lyophilized from 0.22 µm filtered solution in PBS, pH7.4. Generally 5-8% Mannitol or trehalose is added as a protectant before lyophilization.

STORAGE CONDITIONS: Store at -20°C. After reconstitution, aliquot and store at -20°C and use within 3 months. Avoid repeated freezing and thawing cycles.

RECONSTITUTION: Centrifuge the vial prior to opening. Reconstitute in sterile PBS, pH 7.4 to a concentration of 50 µg/ml. Do not vortex. This solution can be stored at 2-8°C for up to 1 month. For extended storage, it is recommended to store at -20°C.

DESCRIPTION: Programmed cell death 1 ligand 2 (PD-L2 or PDCD1 ligand 2) is also known as Butyrophilin B7-DC, CD antigen CD273, which belongs to the immunoglobulin superfamily or BTN/MOG family. The expression of PD-L2 is up-regulated by IFNG/IFN-gamma stimulation in monocytes and induced on dendritic cells grown from peripheral blood mononuclear cells with CSF2 and IL-4. PD-L2 Involved in the costimulatory signal, essential for T-cell proliferation and IFNG production in a PDCD1-independent manner. PD-L2 interaction with PDCD1 inhibits T-cell proliferation by blocking cell cycle progression and cytokine production.

BIOLOGICAL ACTIVITY: Measured by its binding ability in a functional ELISA. Immobilized rh B7-DC / PD-L2 / CD273 at 1 µg/mL (100 µl/well) can bind rhPDCD-1 with a linear range of 15 - 500 ng/ml.



Human recombinant CD273/B7-DC/PD-L2

RELATED PRODUCTS:

- Human CellExp™ CD223, human recombinant (Cat. No. 7278-10, -50)
- Human CellExp™ CD71, human recombinant (Cat. No. 7279-10, -50)
- Human CellExp™ CD33, human recombinant (Cat. No. 7370-10, -50)
- Human CellExp™ CD36, human recombinant (Cat. No. 7371-10, -50)
- Human CellExp™ CD87, human recombinant (Cat. No. 7372-20, -100)
- Human CellExp™ CD360, human recombinant (Cat. No. 7373-20, -100)
- Human CellExp™ CD244, human recombinant (Cat. No. 7374-10, -50)
- Human CellExp™ CD304, human recombinant (Cat. No. 7375-10)

FOR RESEARCH USE ONLY! Not to be used in humans.