

## Human CellExp™ CD33/SIGLEC-3

<b>CATALOG #:</b>	7370-10	10 µg
	7370-50	50 µg
<b>ALTERNATE NAMES:</b>	CD33, SIGLEC3, gp67	
<b>SOURCE:</b>	HEK293 cells (Asp 18-His 259 of human protein)	
<b>PURITY:</b>	≥ 95% by SDS-PAGE gel	

**MOL. WEIGHT:** This protein is fused with C-terminal 6xHis tag, has a calculated MW of 27.6 kDa expressed. The predicted N-terminus is Asp 18. Protein migrates as 40-45 kDa in reduced SDS-PAGE.

**ENDOTOXIN LEVEL:** <1 EU/µg by LAL method

**FORM:** Lyophilized

**FORMULATION:** Lyophilized from 0.22 µm filtered solution in PBS, pH7.4. Generally 5-8% Mannitol or trehalose is added as a protectant before lyophilization.

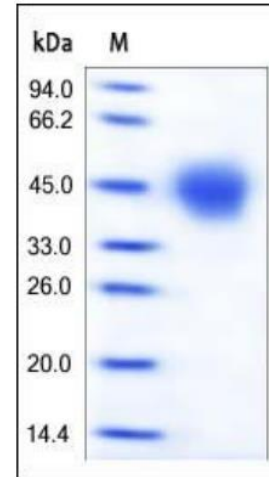
**STORAGE CONDITIONS:** Store at -20 °C. After reconstitution, aliquot and store at -20 °C and use within 3 months. Avoid repeated freezing and thawing cycles.

**RECONSTITUTION:** Centrifuge the vial prior to opening. Reconstitute in sterile PBS, pH 7.4 to a concentration of 50 µg/ml. Do not vortex. This solution can be stored at 2-8 °C for up to 1 month. For extended storage, it is recommended to store at -20 °C.

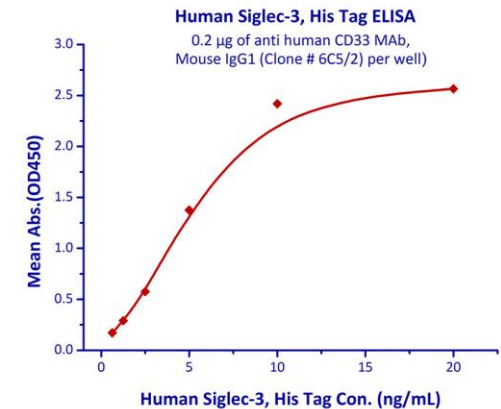
**DESCRIPTION:** Myeloid cell surface antigen CD33 also known as SIGLEC3, Siglecs (sialic acid binding Ig-like lectins) and GP67, is a single-pass type I membrane protein which belongs to the immunoglobulin superfamily and SIGLEC (sialic acid binding Ig-like lectin) family. Human CD33/Siglec-3 cDNA encodes a 364 amino acid (aa) polypeptide with a hydrophobic signal peptide, an N-terminal Ig-like V-type domain, one Ig-like C2-type domains, a transmembrane region and a cytoplasmic tail. CD33/Siglec-3 usually considered myeloid-specific, but it can also be found on some lymphoid cells. In the immune response, CD33/Siglec-3 may act as an inhibitory receptor upon ligand induced tyrosine phosphorylation by recruiting cytoplasmic phosphatase(s) via their SH2

Domain (s) that block signal transduction through dephosphorylation of signaling molecules. CD33/Siglec-3 induces apoptosis in acute myeloid leukemia.

**BIOLOGICAL ACTIVITY:** Measured by its binding ability in a functional ELISA. Immobilized anti human CD33 mAb, Mouse IgG1 at 2 µg/mL (100 µl/well) can bind Human Siglec-3, His Tag with a linear range of 0.625-10 ng/ml.



Human recombinant CD33/SIGLEC-3



Immobilized anti human CD33 mAb, Mouse IgG1 at 2 µg/mL (100 µl/well) can bind Human Siglec-3, His Tag with a linear range of 0.625-10 ng/ml.

### RELATED PRODUCTS:

- Human CellExp™ CD223, human recombinant (**Cat. No. 7278-10, -50**)
- Human CellExp™ CD71, human recombinant (**Cat. No. 7279-10, -50**)
- Human CellExp™ CD273, human recombinant (**Cat. No. 7369-10, -50**)
- Human CellExp™ CD36, human recombinant (**Cat. No. 7371-10, -50**)
- Human CellExp™ CD87, human recombinant (**Cat. No. 7372-20, -100**)
- Human CellExp™ CD360, human recombinant (**Cat. No. 7373-20, -100**)
- Human CellExp™ CD244, human recombinant (**Cat. No. 7374-10, -50**)
- Human CellExp™ CD304, human recombinant (**Cat. No. 7375-10**)

**FOR RESEARCH USE ONLY! Not to be used in humans.**