

Human CellExp™ CD319 / SLAMF7 / CRACC, Human Recombinant

CATALOG #:	7376-10	10 µg
	7376-50	50 µg
ALTERNATE NAMES:	SLAMF7, CD319, CS1, CRACC, 19A, FOAP-12	
SOURCE:	HEK 293 cells (Ser 23 – Met 226)	
PURITY:	≥ 95% by SDS-PAGE gel	

MOL. WEIGHT: This protein is fused with 6xHis tag at the C-terminus and has a predicted MW of 23.4 kDa. Protein migrates as 32-50 kDa under reducing conditions due to glycosylation.

ENDOTOXIN LEVEL: < 1 EU/µg by LAL method

FORM: Lyophilized

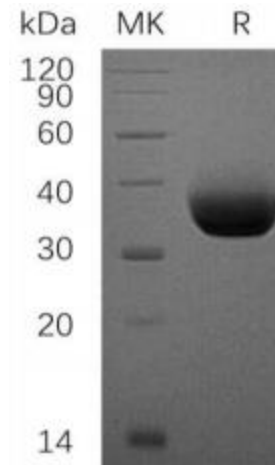
FORMULATION: Lyophilized from 0.2 µm filtered solution of 20 mM PB, 150 mM NaCl, 5% Trehalose, pH 7.4.

STORAGE CONDITIONS: Store at -20 °C and use within 3 months. Avoid repeated freezing and thawing cycles.

RECONSTITUTION: Centrifuge the vial prior to opening. Do not vortex. Reconstitute in distilled water to a concentration of at least 100 µg/ml. Store aliquots at -20 °C.

DESCRIPTION: SLAM family member 7 (SLAMF7) is also known as CD2-like receptor-activating cytotoxic cells (CRACC), Membrane protein FOAP-12, CD antigen CD319, Novel Ly9, Protein 19A, which is a single-pass type I membrane protein and a member of the CD2 family of cell surface receptors. SLAMF7 is expressed in spleen, lymph node, peripheral blood leukocytes, bone marrow, small intestine, stomach, appendix, lung and trachea. Isoform 1 of SLAMF7 mediates NK cell activation through a SH2D1A-independent extracellular signal-regulated ERK-mediated pathway. May play a role in lymphocyte adhesion. Isoform 3 of SLAMF7 does not mediate any NK cell activation.

BIOLOGICAL ACTIVITY: Measured by its ability to bind biotinylated human SLAMF7 in a functional ELISA.



Human recombinant CD319/SLAMF7/CRACC was loaded on SDS-PAGE under reducing conditions and visualized by Coomassie blue stain.

RELATED PRODUCTS:

- Human CellExp™ CD223, human recombinant (Cat. No. 7278-10, -50)
- Human CellExp™ CD71, human recombinant (Cat. No. 7279-10, -50)
- Human CellExp™ CD273, human recombinant (Cat. No. 7369-10, -50)
- Human CellExp™ CD33, human recombinant (Cat. No. 7370-10, -50)
- Human CellExp™ CD36, human recombinant (Cat. No. 7371-10, -50)
- Human CellExp™ CD87, human recombinant (Cat. No. 7372-20, -100)
- Human CellExp™ CD360, human recombinant (Cat. No. 7373-20, -100)
- Human CellExp™ CD244, human recombinant (Cat. No. 7374-10, -50)

FOR RESEARCH USE ONLY! Not to be used in humans.