

# Human CellExp™ CD306 / LAIR2, human recombinant

**CATALOG #:** 7377-10 10 µg  
7377-50 50 µg

**ALTERNATE NAMES:** LAIR2, CD306

**SOURCE:** HEK 293 cells (Gln 22 – Pro 152)

**PURITY:** ≥ 95% by SDS-PAGE gel

**MOL. WEIGHT:** This protein is fused with 6×His tag at the C-terminus, has a calculated MW of 14.9 kDa. The predicted N-terminus is Gln 22. DTT-reduced Protein migrates as 19-23 kDa.

**ENDOTOXIN LEVEL:** <1 EU/µg by LAL method

**FORM:** Lyophilized

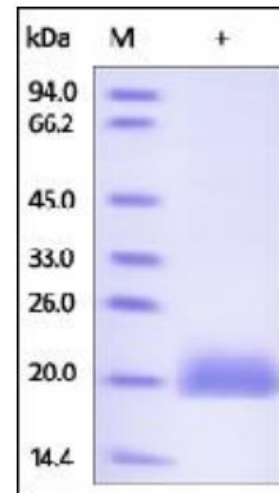
**FORMULATION:** Lyophilized from 0.22 µm filtered solution in PBS, pH7.4. Generally 5-8% Mannitol or trehalose is added as a protectant before lyophilization.

**STORAGE CONDITIONS:** Store at -20°C. After reconstitution, aliquot and store at -20°C and use within 3 months. Avoid repeated freezing and thawing cycles.

**RECONSTITUTION:** Centrifuge the vial prior to opening. Reconstitute in sterile PBS, pH 7.4 to a concentration of 50 µg/ml. Do not vortex. This solution can be stored at 2-8°C for up to 1 month. For extended storage, it is recommended to store at -20°C.

**DESCRIPTION:** Leukocyte-associated immunoglobulin-like receptor 2 (LAIR2) is also known as CD antigen CD306. LAIR2 contains one Ig-like C2-type (immunoglobulin-like) domain. LAIR2 is a member of the immunoglobulin superfamily and was identified by its similarity to LAIR1, an inhibitory receptor present on mononuclear leukocytes. LAIR2 / CD306 is thought to be secreted and may help modulate mucosal tolerance.

**BIOLOGICAL ACTIVITY:** Measured by the ability of the immobilized protein to support the adhesion of HT-29 human colon adenocarcinoma cells. When 10000 cells/well are added to rhLAIR2 /CD306 coated plates (50 µg/ml with 100 µl/well), approximately >40% cells will adhere after 10 minutes at 37°C



Human recombinant CD306/LAIR2

## RELATED PRODUCTS:

- Human CellExp™ CD223, human recombinant (Cat. No. 7278-10, -50)
- Human CellExp™ CD71, human recombinant (Cat. No. 7279-10, -50)
- Human CellExp™ CD273, human recombinant (Cat. No. 7369-10, -50)
- Human CellExp™ CD33, human recombinant (Cat. No. 7370-10, -50)
- Human CellExp™ CD36, human recombinant (Cat. No. 7371-10, -50)
- Human CellExp™ CD87, human recombinant (Cat. No. 7372-20, -100)
- Human CellExp™ CD360, human recombinant (Cat. No. 7373-20, -100)
- Human CellExp™ CD244, human recombinant (Cat. No. 7374-10, -50)

**FOR RESEARCH USE ONLY! Not to be used in humans.**