

Human CellExp™ CD48 / BCM1 / SLAMF2, human recombinant

CATALOG #: 7380-10 10 µg
7380-50 50 µg

ALTERNATE NAMES: CD48, BCM1, SLAMF2, BLAST1, BLAST, BLAST1, MEM-102, TCT.1, BCM-1, SLAMF-2, BLAST-1

SOURCE: HEK 293 cells (Gln 27 – Ser 220)

PURITY: ≥ 95% by SDS-PAGE gel

MOL. WEIGHT: This protein is fused with 6×His tag at the C-terminus, has a calculated MW of 23.2 kDa. The predicted N-terminus is Gln 27. DTT-reduced Protein migrates as 38-45 kDa due to glycosylation.

ENDOTOXIN LEVEL: <1 EU/µg by LAL method

FORM: Lyophilized

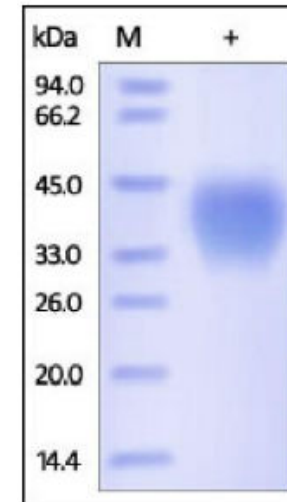
FORMULATION: Lyophilized from 0.22 µm filtered solution in PBS, pH7.4. Generally 5-8% Mannitol or trehalose is added as a protectant before lyophilization.

STORAGE CONDITIONS: Store at -20°C. After reconstitution, aliquot and store at -20°C and use within 3 months. Avoid repeated freezing and thawing cycles.

RECONSTITUTION: Centrifuge the vial prior to opening. Reconstitute in sterile PBS, pH 7.4 to a concentration of 50 µg/ml. Do not vortex. This solution can be stored at 2-8°C for up to 1 month. For extended storage, it is recommended to store at -20°C.

DESCRIPTION: CD48 antigen is also known as Signaling lymphocytic activation molecule 2, SLAM family member 2 (SLAMF2), Leukocyte antigen MEM-102, BCM1 surface antigen, B-lymphocyte activation marker BLAST-1. CD48 is a 65 kDa GPI-linked protein which belongs to the CD2 subfamily of immunoglobulin superfamily molecules. CD48 antigen contains two Ig-like C2-type (immunoglobulin-like) domains and two Ig-like V-type (immunoglobulin-like) domain. CD48 interacts with CD244 in an heterophilic manner. CD48 is ligand for CD2. CD48 might facilitate interaction between activated lymphocytes. CD48 is probably involved in regulating T-cell activation.

BIOLOGICAL ACTIVITY: Measured by its binding ability in a functional ELISA. Immobilized human CD244 protein Fc Chimera at 5 µg/ml (100 µl/well) can bind human CD48 with a linear range of 0.1 - 4 µg/ml.



Human recombinant CD48/BCM1/SLAMF2

RELATED PRODUCTS:

- Human CellExp™ CD223, human recombinant (Cat. No. 7278-10, -50)
- Human CellExp™ CD71, human recombinant (Cat. No. 7279-10, -50)
- Human CellExp™ CD273, human recombinant (Cat. No. 7369-10, -50)
- Human CellExp™ CD33, human recombinant (Cat. No. 7370-10, -50)
- Human CellExp™ CD36, human recombinant (Cat. No. 7371-10, -50)
- Human CellExp™ CD87, human recombinant (Cat. No. 7372-20, -100)
- Human CellExp™ CD360, human recombinant (Cat. No. 7373-20, -100)
- Human CellExp™ CD244, human recombinant (Cat. No. 7374-10, -50)

FOR RESEARCH USE ONLY! Not to be used in humans.