

Human CellExp™ LAMP1/CD107a, human recombinant

CATALOG #: 7381-10 10 µg
7381-50 50 µg

ALTERNATE NAMES: LAMP1, CD107a

SOURCE: HEK 293 cells (Ala 29 –Met 382)

PURITY: ≥ 95% by SDS-PAGE gel

MOL. WEIGHT: This protein is fused with 6×His tag at the C-terminus, has a calculated MW of 39.2 kDa. The predicted N-terminus is Ala 29. DTT-reduced Protein migrates as 60-100 kDa due to different glycosylation.

ENDOTOXIN LEVEL: <1 EU/µg by LAL method

FORM: Lyophilized

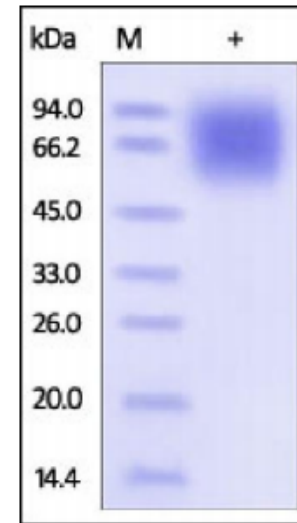
FORMULATION: Lyophilized from 0.22 µm filtered solution in PBS, pH7.4. Generally 5-8% Mannitol or trehalose is added as a protectant before lyophilization.

STORAGE CONDITIONS: Store at -20°C. After reconstitution, aliquot and store at -20°C and use within 3 months. Avoid repeated freezing and thawing cycles.

RECONSTITUTION: Centrifuge the vial prior to opening. Reconstitute in sterile PBS, pH 7.4 to a concentration of 50 µg/ml. Do not vortex. This solution can be stored at 2-8°C for up to 1 month. For extended storage, it is recommended to store at -20°C.

DESCRIPTION: Lysosomal-associated membrane protein 1 (LAMP1) is also known as CD107a (Cluster of Differentiation 107a). LAMP1 / CD107a belongs to the LAMP family. This glycoprotein provides selectins with carbohydrate ligands. It may also play a role in tumor cell metastasis. CD107a has also been shown to be a marker of degranulation on lymphocytes such as CD8+ and NK cells.

BIOLOGICAL ACTIVITY: Measured by its binding ability in a functional ELISA. When rhLAMP1 /CD107a is coated at 1 µg/ml, rhGalectin-3 (Cat # 4684) binds with an apparent K_d <30 nM.



Human recombinant LAMP1/CD107a

RELATED PRODUCTS:

- Human CellExp™ CD223, human recombinant (Cat. No. 7278-10, -50)
- Human CellExp™ CD71, human recombinant (Cat. No. 7279-10, -50)
- Human CellExp™ CD273, human recombinant (Cat. No. 7369-10, -50)
- Human CellExp™ CD33, human recombinant (Cat. No. 7370-10, -50)
- Human CellExp™ CD36, human recombinant (Cat. No. 7371-10, -50)
- Human CellExp™ CD87, human recombinant (Cat. No. 7372-20, -100)
- Human CellExp™ CD360, human recombinant (Cat. No. 7373-20, -100)
- Human CellExp™ CD244, human recombinant (Cat. No. 7374-10, -50)
- Human CellExp™ CD304, human recombinant (Cat. No. 7375-10)
- Human CellExp™ CD319, human recombinant (Cat. No. 7376-10, -50)
- Human CellExp™ CD306, human recombinant (Cat. No. 7377-10, -50)
- Human CellExp™ CD84, human recombinant (Cat. No. 7378-10, -50)
- Human CellExp™ CD111, human recombinant (Cat. No. 7379-10, -50)
- Human CellExp™ CD48, human recombinant (Cat. No. 7380-10, -50)

FOR RESEARCH USE ONLY! Not to be used in humans.

