

Human CellExp™ ErbB1/EGFR, mouse recombinant

CATALOG #: 7402-10 10 µg

ALTERNATE NAMES: EGFR, ERBB, ERBB1, HER1, PIG61, mENA

SOURCE: HEK 293 cells (Leu 25 - Lys 642)

PURITY: ≥ 95% by SDS-PAGE gel

MOL. WEIGHT: This protein has a C-terminal 6xHis tag and has a calculated MW of 70 kDa. The predicted N-terminus is Leu 25. In DTT-reduced SDS-PAGE, protein migrates as 110-115 kDa.

ENDOTOXIN LEVEL: <1 EU/µg by LAL method

FORM: Lyophilized

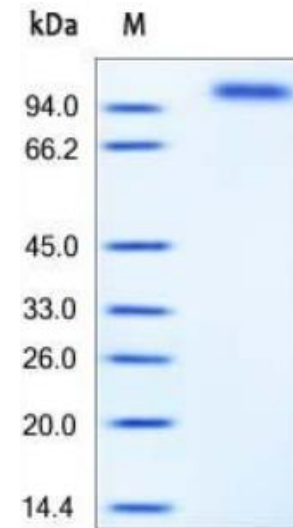
FORMULATION: Lyophilized from 0.22 µm filtered solution in PBS, pH7.4. Generally 5-8% Mannitol or trehalose is added as a protectant before lyophilization.

STORAGE CONDITIONS: Store at -20°C. After reconstitution, aliquot and store at -20°C and use within 3 months. Avoid repeated freezing and thawing cycles.

RECONSTITUTION: Centrifuge the vial prior to opening. Reconstitute in sterile PBS, pH 7.4 to a concentration of 50 µg/ml. Do not vortex. This solution can be stored at 2-8°C for up to 1 month. For extended storage, it is recommended to store at -20°C.

DESCRIPTION: The epidermal growth factor receptor (EGFR; ErbB-1; HER1) is the cell-surface receptor for members of the epidermal growth factor family (EGF-family) of extracellular protein ligands. The epidermal growth factor receptor is a member of the ErbB family of receptors, a subfamily of four closely related receptor tyrosine kinases: EGFR (ErbB-1), HER2/c-neu (ErbB-2), Her 3 (ErbB-3) and Her 4 (ErbB-4). Mutations affecting EGFR expression or activity could result in cancer.

BIOLOGICAL ACTIVITY: Measured by its binding ability in a functional ELISA. Immobilized mouse EGF at 10 µg/ml can bind mouse EGFR with a linear range of 2.5–1000 ng/ml.



Mouse recombinant EGFR/ErbB1

RELATED PRODUCTS:

- Human CellExp™ HER1/ErbB1, human recombinant (**Cat. No. 7396-10**)
- Human CellExp™ HER2/ErbB2, human recombinant (**Cat. No. 7397-10, -50**)
- Human CellExp™ HER3/ErbB3, human recombinant (**Cat. No. 7400-10, -50**)
- Human CellExp™ HER4/ErbB4, human recombinant (**Cat. No. 7401-10, -50**)
- EGF Receptor, human recombinant (**Cat. No. 7135-10, -50**)
- ErbB4/HER4 (His Tagged), Human Recombinant (**Cat. No. 7773-5**)
- HER2, Active (**Cat. No. 7762-5, -100**)
- HER2/ErbB2 Antibody (**Cat. No. 3783-100**)

FOR RESEARCH USE ONLY! Not to be used in humans.