

Human CellExp™ Kallikrein-13, human recombinant

CATALOG #: 7413-10 10 µg

ALTERNATE NAMES: KLK13, KLKL4, KLK-13, Kallikrein-13

SOURCE: HEK 293 cells (Gly 18 – Ile 262)

PURITY: ≥ 95% by SDS-PAGE gel

MOL. WEIGHT: This protein is fused with 6xhis tag at the C-terminus, and has a calculated MW of 28 kDa. The predicted N-terminus is Gly 18. DTT-reduced Protein migrates as 33-40 kDa in SDS-PAGE due to glycosylation.

ENDOTOXIN LEVEL: <1 EU/µg by LAL method

FORM: Lyophilized

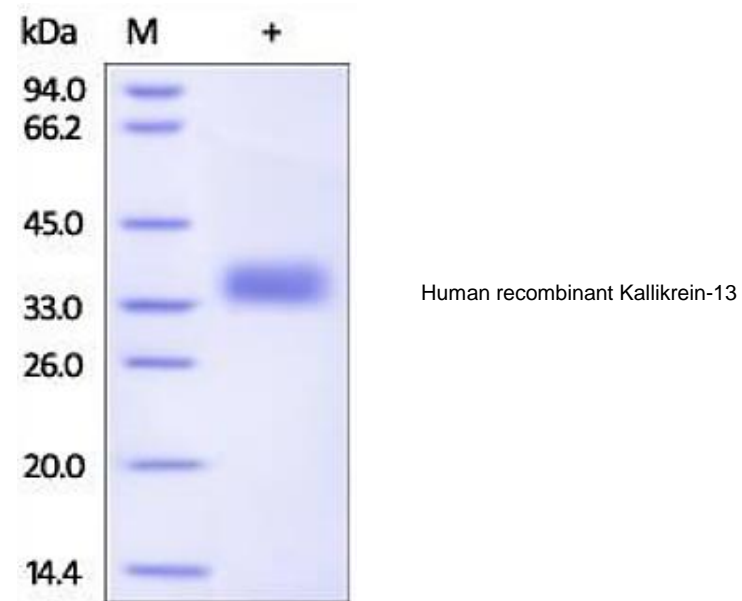
FORMULATION: Lyophilized from 0.22 µm filtered solution in 20 mM MES, 150 mM NaCl, pH 6.0. Normally Mannitol or Trehalose are added as protectants before lyophilization.

STORAGE CONDITIONS: Store at -20°C. After reconstitution, aliquot and store at -20°C and use within 3 months. Avoid repeated freezing and thawing cycles.

RECONSTITUTION: Centrifuge the vial prior to opening. Reconstitute in sterile PBS, pH 7.4 to a concentration of 50 µg/ml. Do not vortex. This solution can be stored at 2-8°C for up to 1 month. For extended storage, it is recommended to store at -20°C.

DESCRIPTION: Kallikrein-13 (KLK13) is also known as Kallikrein-like protein 4 (KLK-L4), is a secreted protein, belongs to the peptidase S1 family and Kallikrein subfamily. KLK-13 contains one peptidase S1 domain. KLK13 is mainly expressed in prostate, breast, testis and salivary gland. KLK13 may be involved in the pathogenesis and / or progression of breast and ovary cancers, and is regarded as a novel cancer biomarker. In addition, KLK13 interacts and forms complexes with several serum protease inhibitors, such as alpha2-macroglobulin, and its expression is regulated by steroid hormones.

BIOLOGICAL ACTIVITY: Measured by its ability to cleave the fluorogenic peptide substrate Boc-VPR-AMC. The specific activity is > 150 pmoles / min / µg.



RELATED PRODUCTS:

- Human CellExp™ Kallikrein-1, human recombinant (**Cat. No. 7414-10**)
- Human CellExp™ Kallikrein-3, human recombinant (**Cat. No. 7415-10**)
- Human CellExp™ Kallikrein-4, human recombinant (**Cat. No. 7416-10**)
- Human CellExp™ Kallikrein-11, human recombinant (**Cat. No. 7417-10**)
- Kallikrein, Human Plasma (**Cat # 4093-50**)
- KLK3 (Kallikrein-3), human recombinant (**Cat # 4727-20, -100, -1000**)
- Kallikrein 12 (KLK12) Antibody (**Cat # 3720-100**)
- Kallikrein 12 (KLK12) Blocking Peptide (**Cat # 3720BP-50**)

FOR RESEARCH USE ONLY! Not to be used in humans.