

Human CellExp™ Kallikrein-3, human recombinant

CATALOG #:	7415-10	10 µg
ALTERNATE NAMES:	KLK3, KLKB1, Kallikrein-3, APS, KLK2A1, PSA, Hk3, Semin, Semenogelase	
SOURCE:	HEK 293 cells (Ala 18 – Pro 261)	
PURITY:	≥ 92% by SDS-PAGE gel	
MOL. WEIGHT:	This protein is fused with 6xHis tag at the C-terminus, has a calculated MW of 27.7 kDa. The predicted N-terminus is Ala 18. DTT-reduced Protein migrates as 36 kDa due to glycosylation.	
ENDOTOXIN LEVEL:	<1 EU/µg by LAL method	
FORM:	Lyophilized	

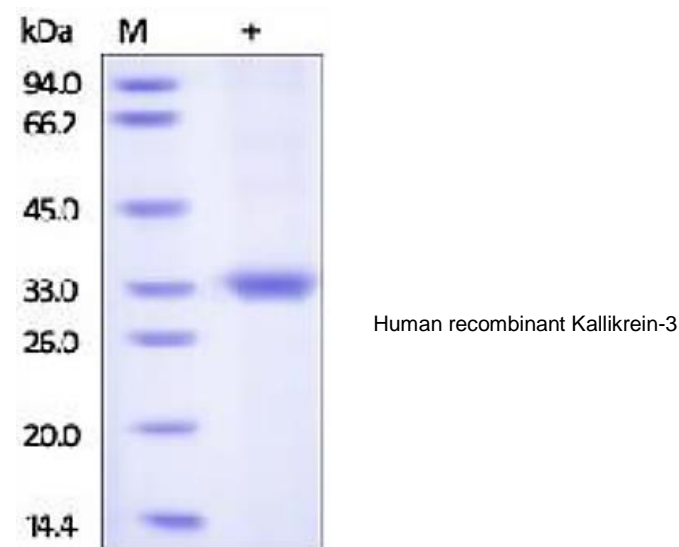
FORMULATION: Lyophilized from 0.22 µm filtered solution in 50 mM Tris, 150 mM NaCl, pH 7.5. Normally Mannitol or Trehalose is added as protectants before lyophilization.

STORAGE CONDITIONS: Store at -20°C. After reconstitution, aliquot and store at -20°C and use within 3 months. Avoid repeated freezing and thawing cycles.

RECONSTITUTION: Centrifuge the vial prior to opening. Reconstitute in sterile PBS, pH 7.4 to a concentration of 50 µg/ml. Do not vortex. This solution can be stored at 2-8°C for up to 1 month. For extended storage, it is recommended to store at -20°C.

DESCRIPTION: Kallikrein-3 (KLK3) is also known as Prostate-specific antigen (PSA), APS, Gamma-seminoprotein (Seminin), P-30 antigen, Semenogelase, is a glycoprotein enzyme, is a member of the kallikrein-related peptidase family and is secreted by the epithelial cells of the prostate gland. The preferential cleavage site of KLK3 is “-Tyr-|-Xaa-”, the catalytic activity is inhibited by SERPINA5 and is strongly inhibited by Zn²⁺. KLK3 hydrolyzes semenogelin-1 thus leading to the liquefaction of the seminal coagulum.

BIOLOGICAL ACTIVITY: Measured by its ability to cleave the colorimetric peptide substrate, Succinyl – Arg – Pro – Tyr – p – Nitroanilide (Suc-RPY-pNA). The specific activity is >60 pmoles / min / µg.



RELATED PRODUCTS:

- Human CellExp™ Kallikrein-13, human recombinant (**Cat. No. 7413-10**)
- Human CellExp™ Kallikrein-1, human recombinant (**Cat. No. 7414-10**)
- Human CellExp™ Kallikrein-4, human recombinant (**Cat. No. 7416-10**)
- Human CellExp™ Kallikrein-11, human recombinant (**Cat. No. 7417-10**)
- Kallikrein, Human Plasma (**Cat # 4093-50**)
- KLK3 (Kallikrein-3), human recombinant (**Cat # 4727-20, -100, -1000**)
- Kallikrein 12 (KLK12) Antibody (**Cat # 3720-100**)
- Kallikrein 12 (KLK12) Blocking Peptide (**Cat # 3720BP-50**)

FOR RESEARCH USE ONLY! Not to be used in humans.