

Human CellExp™ SERPIN F1, human recombinant

CATALOG #: 7418-10 10 µg
7418-50 50 µg

ALTERNATE NAMES: SERPINF1, Serpin F1, PEDF, PIG35, EPC-1

SOURCE: HEK 293 cells (Gln 20 –Pro 418)

PURITY: ≥ 95% by SDS-PAGE gel

MOL. WEIGHT: This protein is fused with 6xHis tag at the C-terminus, has a calculated MW of 45.2 kDa. The predicted N-terminus is Gln 20. DTT-reduced Protein migrates as 45-55 kDa.

ENDOTOXIN LEVEL: <1 EU/µg by LAL method

FORM: Lyophilized

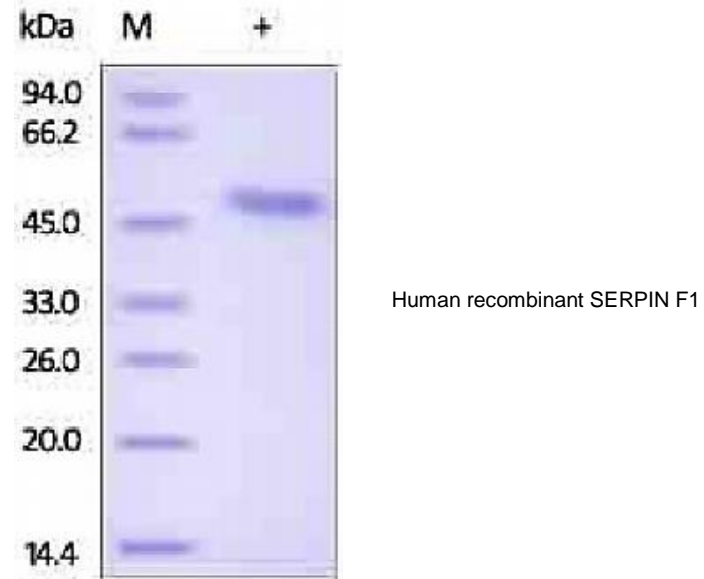
FORMULATION: Lyophilized from 0.22 µm filtered solution in 50 mM Tris, 150 mM NaCl, pH 7.4. Normally Mannitol or Trehalose are added as protectants before lyophilization.

STORAGE CONDITIONS: Store at -20°C. After reconstitution, aliquot and store at -20°C and use within 3 months. Avoid repeated freezing and thawing cycles.

RECONSTITUTION: Centrifuge the vial prior to opening. Reconstitute in sterile PBS, pH 7.4 to a concentration of 50 µg/ml. Do not vortex. This solution can be stored at 2-8°C for up to 1 month. For extended storage, it is recommended to store at -20°C.

DESCRIPTION: Serpin F1 (SERPINF1) is also known as Pigment epithelium-derived factor (PEDF), Cell proliferation-inducing gene 35 protein (PIG35). Serpin F1 belongs to the serpin family. Serpin F1 is expressed in quiescent cells. PEDF has a variety of functions including antiangiogenic, antitumorigenic, and neurotrophic properties. Endothelial cell migration is inhibited by SERPINF1/ PEDF. PEDF / SERPINF1 suppresses retinal neovascularization and endothelial cell proliferation. PEDF is also responsible for apoptosis of endothelial cells either through the p38 MAPK pathway or through the FAS/FASL pathway. PEDF also displays neurotrophic functions.

BIOLOGICAL ACTIVITY: Measured by its ability to enhance the adhesion of Saos-2 human osteosarcoma cells to bovine Collagen I coated plate. The ED₅₀ for this effect is typically 0.5-1.6 µg/ml.



RELATED PRODUCTS:

- Human CellExp™ SERPINA3, human recombinant, (Cat. No. 7419-10)
- Human CellExp™ SERPINA1 /A1AT, human recombinant, (Cat. No. 7235-10)
- Human CellExp™ SERPINA8, human recombinant, (Cat. No. 7236-10)
- Serpin E1/PAI-1, human recombinant, (Cat. No. 4731-10, -100, -1000)
- Serpin A6 Antibody (Cat. No. 3906-100)
- Serpin A6 Blocking Peptide (Cat. No. 3906BP-100)
- Neuroserpin, human recombinant, (Cat. No. 7181-10, -50)

FOR RESEARCH USE ONLY! Not to be used in humans.