

Human CellExp™ CD62E/E-Selectin, human recombinant

CATALOG #: 7434-20 20 µg
7434-100 100 µg

ALTERNATE NAMES: SELE, RP1-117P20.2, CD62E, ELAM1, ESEL, LECAM2, E-Selectin

SOURCE: HEK 293 cells (Trp 22 – Pro 556)

PURITY: ≥ 95% by SDS-PAGE gel

MOL. WEIGHT: This protein is fused with a 6xhis tag at C-terminus and has a calculated MW of 60 kDa expressed. The predicted N-terminus is Trp22. Protein migrates as 110 kDa in reduced SDS-PAGE resulting from glycosylation.

ENDOTOXIN LEVEL: <1 EU/µg by LAL method

FORM: Lyophilized

FORMULATION: Lyophilized from 0.22 µm filtered solution in PBS, pH7.4. Normally Mannitol or Trehalose is added as protectants before lyophilization.

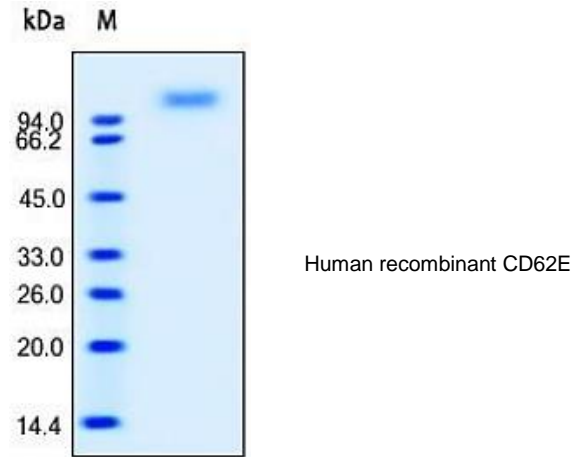
STORAGE CONDITIONS: Store at -20°C. After reconstitution, aliquot and store at -20°C and use within 3 months. Avoid repeated freezing and thawing cycles.

RECONSTITUTION: Centrifuge the vial prior to opening. Reconstitute in sterile PBS, pH 7.4 to a concentration of 50 µg/ml. Do not vortex. This solution can be stored at 2-8°C for up to 1 month. For extended storage, it is recommended to store at -20°C.

DESCRIPTION: E-Selectin, also known as CD62 antigen-like family member E (CD62E), endothelial-leukocyte adhesion molecule 1 (ELAM-1), or leukocyte-endothelial cell adhesion molecule 2 (LECAM2), a member of the Selectin family, is a 107-115 kDa cell surface glycoprotein. It is transiently expressed on vascular endothelial cells in response to IL-1β and TNFα. E selectin has a cassette structure: an N-terminal, C-type lectin domain, an EGF (epidermal-growth-factor)-like domain, 6 Sushi domain (SCR repeat) units, a transmembrane domain (TM) and an intracellular cytoplasmic tail (cyto). During

of injury. The local release of cytokines IL-1 and TNF-α by damaged cells induces the over-expression of E-selectin on endothelial cells of nearby blood vessels. E-selectin mediates the adhesion of tumor cells to endothelial cells, by binding to E-selectin ligands expressed by neutrophils, monocytes, eosinophils, memory-effector T-like lymphocytes, natural killer cells or cancer cells. Furthermore, a number of studies have reported that levels of E-Selectin may be elevated in subjects with a variety of pathological conditions.

BIOLOGICAL ACTIVITY: Measured by the ability of the immobilized protein to support the adhesion of U937 human histiocytic lymphoma cells. When 5 x 10⁴ cells/well are added to human E-Selectin coated plates (2 µg/mL with 100 µL/well), >80% cells will adhere after 1 hour incubation at 37°C.



- RELATED PRODUCTS:**
- Human CellExp™ CD223, human recombinant (Cat. No. 7278-10, -50)
 - Human CellExp™ CD71, human recombinant (Cat. No. 7279-10, -50)
 - Human CellExp™ CD273, human recombinant (Cat. No. 7369-10, -50)
 - Human CellExp™ CD33, human recombinant (Cat. No. 7370-10, -50)
 - Human CellExp™ CD36, human recombinant (Cat. No. 7371-10, -50)
 - Human CellExp™ CD87, human recombinant (Cat. No. 7372-20, -100)
 - Human CellExp™ CD360, human recombinant (Cat. No. 7373-20, -100)
 - Human CellExp™ CD244, human recombinant (Cat. No. 7374-10, -50)
 - Human CellExp™ CD304, human recombinant (Cat. No. 7375-10)
 - Human CellExp™ CD319, human recombinant (Cat. No. 7376-10, -50)
 - Human CellExp™ CD306, human recombinant (Cat. No. 7377-10, -50)
 - Human CellExp™ CD84, human recombinant (Cat. No. 7378-10, -50)

