

# Human CellExp™ CD166/ ALCAM, human recombinant

**CATALOG #:** 7437-10 10 µg  
7437-50 50 µg

**ALTERNATE NAMES:** CD166, ALCAM, CD6L, KG-CAM, MEMD

**SOURCE:** HEK 293 cells (Trp 28 – Ala 526)

**PURITY:** ≥ 95% by SDS-PAGE gel

**MOL. WEIGHT:** This protein is fused with 6xhis tag at the C-terminus, and has a calculated MW of 56.8 kDa. The predicted N-terminus is Trp 28. DTT-reduced Protein migrates as 65-80 kDa in SDS-PAGE due to glycosylation.

**ENDOTOXIN LEVEL:** <1 EU/µg by LAL method

**FORM:** Lyophilized

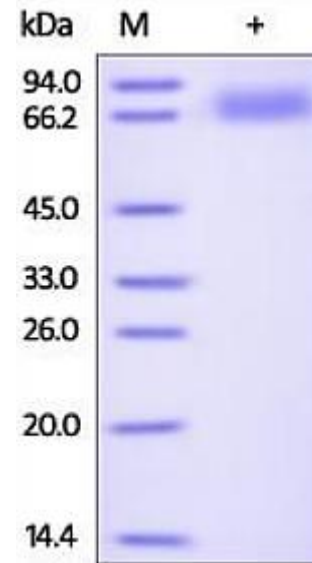
**FORMULATION:** Lyophilized from 0.22 µm filtered solution in PBS, pH7.4. Normally Mannitol or Trehalose is added as protectants before lyophilization.

**STORAGE CONDITIONS:** Store at -20°C. After reconstitution, aliquot and store at -20°C and use within 3 months. Avoid repeated freezing and thawing cycles.

**RECONSTITUTION:** Centrifuge the vial prior to opening. Reconstitute in sterile PBS, pH 7.4 to a concentration of 50 µg/ml. Do not vortex. This solution can be stored at 2-8°C for up to 1 month. For extended storage, it is recommended to store at -20°C.

**DESCRIPTION:** CD166 antigen is a 100-105 kDa type I transmembrane glycoprotein that is a member of the immunoglobulin superfamily of proteins, which is also known as activated leukocyte cell adhesion molecule (ALCAM) in human, SC-1/DM-GRASP/BEN in the chicken, and KG-CAM in the rat. CD166 is a cell adhesion molecule that binds to CD6. CD166 involved in neurite extension by neurons via heterophilic and homophilic interactions.

**BIOLOGICAL ACTIVITY:** Measured by its binding ability in a functional ELISA. Immobilized rh CD166 / ALCAM at 10 µg/ml (100 µl/well) can bind mouse CD6 Fc Chimera. The EC<sub>50</sub> of mouse CD6 Fc Chimera is 0.4-0.22 µg/ml.



Human recombinant CD166

**RELATED PRODUCTS:**

- Human CellExp™ CD223, human recombinant (Cat. No. 7278-10, -50)
- Human CellExp™ CD71, human recombinant (Cat. No. 7279-10, -50)
- Human CellExp™ CD273, human recombinant (Cat. No. 7369-10, -50)
- Human CellExp™ CD33, human recombinant (Cat. No. 7370-10, -50)
- Human CellExp™ CD36, human recombinant (Cat. No. 7371-10, -50)
- Human CellExp™ CD87, human recombinant (Cat. No. 7372-20, -100)
- Human CellExp™ CD360, human recombinant (Cat. No. 7373-20, -100)
- Human CellExp™ CD244, human recombinant (Cat. No. 7374-10, -50)
- Human CellExp™ CD304, human recombinant (Cat. No. 7375-10)
- Human CellExp™ CD319, human recombinant (Cat. No. 7376-10, -50)
- Human CellExp™ CD306, human recombinant (Cat. No. 7377-10, -50)
- Human CellExp™ CD84, human recombinant (Cat. No. 7378-10, -50)

**FOR RESEARCH USE ONLY! Not to be used in humans.**

