

Human CellExp™ Neprilysin /CD10, human recombinant

CATALOG NO:	7445-10	10 µg
ALTERNATE NAMES:	MME, CALLA, CD10, DKFZp686O16152, MGC126681, MGC126707, NEP, SFE, Neprilysin	
SOURCE:	HEK 293 cells (Tyr 52 – Trp 750)	
PURITY:	≥ 95% by SDS-PAGE gel	
MOL. WEIGHT:	This protein carries no "tag". The protein has a calculated MW of 80 kDa. The predicted N-terminus is Tyr 52. DTT-reduced Protein migrates as 90-100 kDa due to glycosylation.	
ENDOTOXIN LEVEL:	<1 EU/µg by LAL method	
FORM:	Lyophilized	

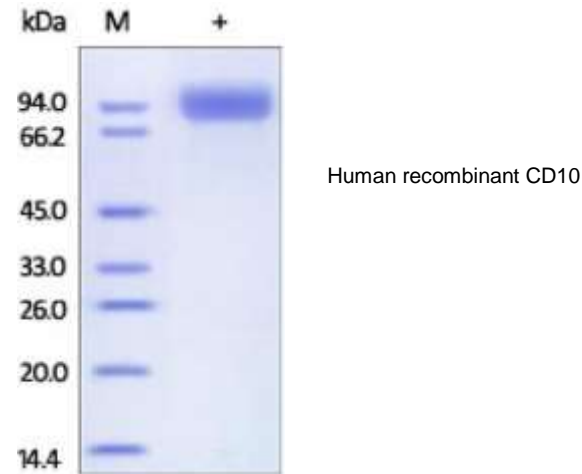
FORMULATION: Lyophilized from 0.22 µm filtered solution in 50 mM tris, 150 mM NaCl, pH 8.0. Normally Mannitol or Trehalose is added as protectants before lyophilization.

STORAGE CONDITIONS: Store at -20°C. After reconstitution, aliquot and store at -20°C and use within 3 months. Avoid repeated freezing and thawing cycles.

RECONSTITUTION: Centrifuge the vial prior to opening. Reconstitute in sterile PBS, pH 7.4 to a concentration of 50 µg/ml. Do not vortex. This solution can be stored at 2-8°C for up to 1 month. For extended storage, it is recommended to store at -20°C.

DESCRIPTION: Cluster of differentiation 10 (CD10), membrane metallo-endopeptidase, neutral endopeptidase (NEP), Neprilysin, and common acute lymphoblastic leukemia antigen (CALLA), is a 90-110-kDa type II transmembrane glycoprotein normally expressed by a variety of tissues, including epithelial cells of the prostate, kidney, intestine, endometrium, adrenal glands, and lung. This zinc-dependent metalloprotease enzyme cleaves peptide bonds on the amino side of hydrophobic residues and inactivates a variety of physiologically active secreted peptides. CD20 is thought to be the rate-limiting degrading enzyme of amyloid β peptide (Aβ) whose abnormal misfolding and aggregation in neural tissue has been implicated in the development of Alzheimer's disease (AD).

present on leukemic cells of pre-B phenotype, and thus serves as the most important biomarker in the diagnosis of human acute lymphocytic leukemia (ALL).



RELATED PRODUCTS:

- Human CellExp™ CD223, human recombinant (Cat. No. 7278-10, -50)
- Human CellExp™ CD71, human recombinant (Cat. No. 7279-10, -50)
- Human CellExp™ CD273, human recombinant (Cat. No. 7369-10, -50)
- Human CellExp™ CD33, human recombinant (Cat. No. 7370-10, -50)
- Human CellExp™ CD36, human recombinant (Cat. No. 7371-10, -50)
- Human CellExp™ CD87, human recombinant (Cat. No. 7372-20, -100)
- Human CellExp™ CD360, human recombinant (Cat. No. 7373-20, -100)
- Human CellExp™ CD244, human recombinant (Cat. No. 7374-10, -50)
- Human CellExp™ CD304, human recombinant (Cat. No. 7375-10, -50)
- Human CellExp™ CD319, human recombinant (Cat. No. 7376-10, -50)
- Human CellExp™ CD306, human recombinant (Cat. No. 7377-10, -50)
- Human CellExp™ CD84, human recombinant (Cat. No. 7378-10, -50)

FOR RESEARCH USE ONLY! Not to be used in humans.