

## Human CellExp™ GHR /Growth Hormone Receptor, human recombinant

<b>CATALOG #:</b>	7477-10	10 µg
<b>ALTERNATE NAMES:</b>	GHR, GHBP, GH receptor	
<b>SOURCE:</b>	HEK 293 cells (Ala 27 – Tyr 264)	
<b>PURITY:</b>	≥ 95% by SDS-PAGE gel	

**MOL. WEIGHT:** This protein is fused with polyhistidine tag at the C-terminus, and has a calculated MW of 28.5 kDa. The predicted N-terminus is Ala 27. DTT-reduced Protein migrates as 40-50 kDa in SDS-PAGE due to glycosylation.

**ENDOTOXIN LEVEL:** <1 EU/µg by LAL method

**FORM:** Lyophilized

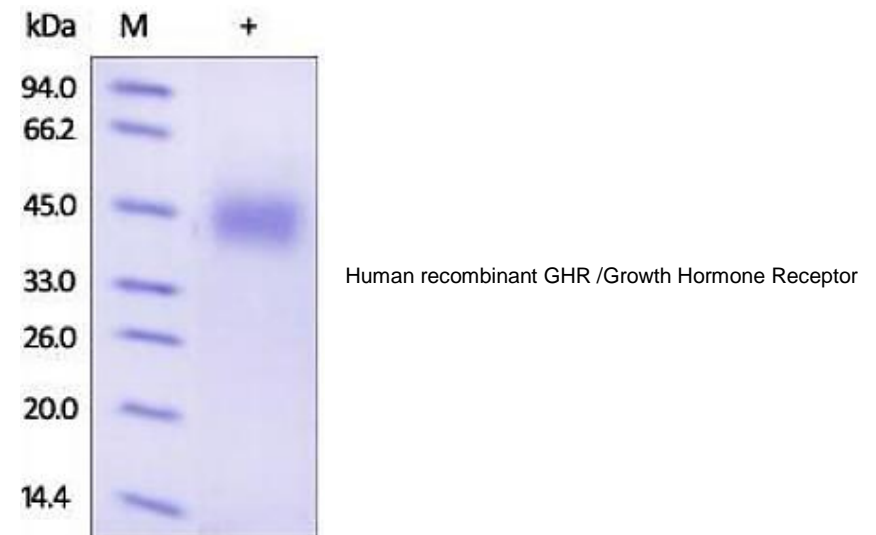
**FORMULATION:** Lyophilized from 0.22 µm filtered solution in PBS, pH 7.4. Normally Mannitol or Trehalose is added as protectants before lyophilization.

**STORAGE CONDITIONS:** Store at -20°C. After reconstitution, aliquot and store at -20°C and use within 3 months. Avoid repeated freezing and thawing cycles.

**RECONSTITUTION:** Centrifuge the vial prior to opening. Reconstitute in sterile PBS, pH 7.4 to a concentration of 50 µg/ml. Do not vortex. This solution can be stored at 2-8°C for up to 1 month. For extended storage, it is recommended to store at -20°C.

**DESCRIPTION:** Growth hormone receptor (GHR) is also known as somatotropin receptor, growth hormone-binding protein (GHBR), which belongs to the type I cytokine receptor family or Type 1 subfamily. GHR contains one fibronectin type-III domain. GHR / GHBR is expressed in various tissues with high expression in liver and skeletal muscle. The soluble form (GHBP) is produced by phorbol ester-promoted proteolytic cleavage at the cell surface (shedding) by ADAM17/TACE. GHR is receptor for pituitary gland growth hormone involved in regulating postnatal body growth. On ligand binding, couples to the JAK2/STAT5 pathway. The soluble form (GHBP) acts as a reservoir of growth hormone in plasma and may be a modulator/inhibitor of GH signaling.

**BIOLOGICAL ACTIVITY:** The bioactivity is measured by its binding ability to human GH in a SPR assay. Covalently immobilized Recombinant Human GHR Protein can bind human growth hormone protein with affinity constant of 1.28 ±0.16 nM range.



### RELATED PRODUCTS:

- Growth Hormone, chicken recombinant (**Cat. No. 4771-50, -500**)
- Growth Hormone, human recombinant (**Cat. No. 4769-100, -500, -5000**)
- Growth Hormone, murine recombinant (**Cat. No. 4770-50, -1000**)
- GH (Growth Hormone) Antibody (**Cat. No. 5769-100**)
- GHRH, human recombinant (**Cat. No. 4784-500**)
- Human CellExp™ HGH, Human Recombinant (**Cat. No. 6457-10, -50**)

**FOR RESEARCH USE ONLY! Not to be used in humans.**