

Human CellExp™ ICAM1 /CD54, human recombinant

CATALOG #: 7486-20 20 µg
7486-100 100 µg

ALTERNATE NAMES: ICAM1, ICAM-1, BB2, BB-2, CD54, CD-54, P3.58

SOURCE: HEK 293 cells (Gln 27 – Glu 480)

PURITY: ≥ 98% by SDS-PAGE gel

MOL. WEIGHT: This protein is fused with Fc fragment of human IgG1 at the C-terminus and has a calculated MW of 75.7 kDa expressed. The predicted N-terminus is Gln 27. Protein migrates as 100-110 kDa in reduced SDS-PAGE resulting from glycosylation.

ENDOTOXIN LEVEL: <1 EU/µg by LAL method

FORM: Lyophilized

FORMULATION: Lyophilized from 0.22 µm filtered solution in 50 mM Tris, 100 mM glycine, pH 7.0. Normally Mannitol or Trehalose is added as protectants before lyophilization.

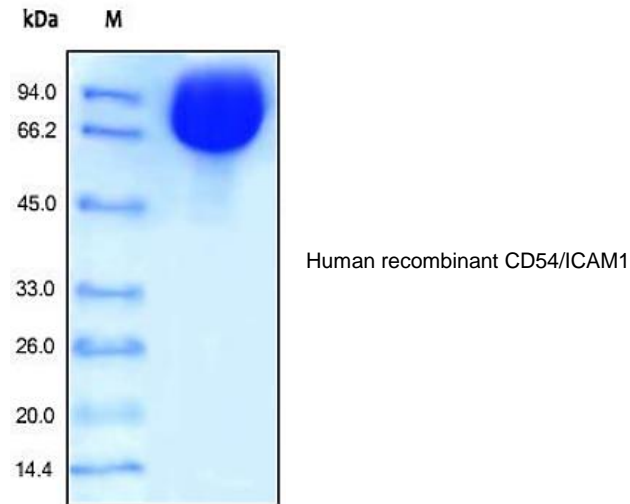
STORAGE CONDITIONS: Store at -20°C. After reconstitution, aliquot and store at -20°C and use within 3 months. Avoid repeated freezing and thawing cycles.

RECONSTITUTION: Centrifuge the vial prior to opening. Reconstitute in sterile PBS, pH 7.4 to a concentration of 50 µg/ml. Do not vortex. This solution can be stored at 2-8°C for up to 1 month. For extended storage, it is recommended to store at -20°C.

DESCRIPTION: Inter-Cellular Adhesion Molecule 1 (ICAM-1), also known as Cluster of Differentiation 54 (CD54), is a member of the immunoglobulin superfamily, and is a cell surface glycoprotein which is typically expressed in low concentrations on endothelial cells and cells of the immune system. The protein encoded by this gene is a type of intercellular adhesion molecule continuously present in low concentrations in the membranes of leukocytes and endothelial cells. Upon cytokine stimulation, the concentrations greatly increase. ICAM-1 can be induced by interleukin-1 (IL-1) and tumor necrosis factor alpha

(TNFα) and is expressed by the vascular endothelium, macrophages, and lymphocytes. ICAM-1 is a ligand for LFA-1 (integrin), a receptor found on leukocytes. When activated, leukocytes bind to endothelial cells via ICAM-1/LFA-1 and then transmigrate into tissues. ICAM-1 has been implicated in subarachnoid hemorrhage (SAH). Levels of ICAM-1 are shown to be significantly elevated in patients with SAH over control subjects in many studies. ICAM-1 expressed by respiratory epithelial cells is also the binding site for rhinovirus, the causative agent of most common colds.

BIOLOGICAL ACTIVITY: Measured by the ability of the immobilized protein to support the adhesion of PMA-stimulated HSB2 human peripheral blood acute lymphoblastic leukemia cells. When 5×10⁴ cells/well are added to rhICAM/Fc Chimera coated plates (12.5 µg/ml with 100 µl/well), >60% will adhere after PMA 1 hour incubation at 37°C.



RELATED PRODUCTS:

- ICAM-1 Antibody (Cat # 3422R-100)
- ICAM-1, human recombinant (Cat # 7161-10, -50)
- ICAM-1 (human) ELISA Kit (Cat # K7161-100)
- ICAM-1 (mouse) ELISA Kit (Cat # K7162-100)
- ICAM-1 (rat) ELISA Kit (Cat # K7163-100)
- ICAM-2 Antibody (Cat # 3926-100)
- ICAM-2 Blocking Peptide (Cat # 3926BP-50)
- ICAM-2, human recombinant (Cat # 7349-50)

