

Human CellExp™ LEPR/CD295, Human Recombinant

CATALOG #:	7497-10	10 µg
	7497-50	50 µg
ALTERNATE NAMES:	LEPR, CD295, DKFZp686B1731, LEP-R, OB-R, OBR, Leptin receptor	
SOURCE:	HEK 293 cells (Phe 22 – Asp 839)	
PURITY:	≥ 90% by SDS-PAGE gel	
MOL. WEIGHT:	This protein carries a human IgG1 Fc tag at the C-terminus. The protein has a calculated MW of 119.6 kDa. However, the protein migrates as 150-165 kDa under reducing conditions (SDS-PAGE) due to glycosylation.	
ENDOTOXIN LEVEL:	<1 EU/µg by LAL method	
FORM:	Lyophilized	

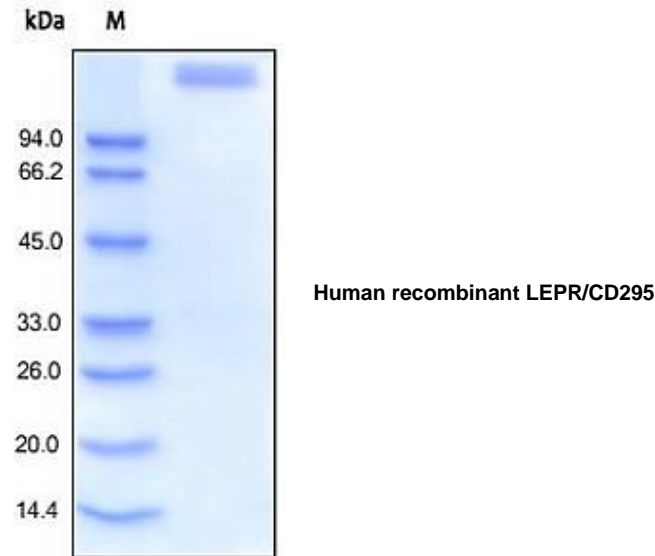
FORMULATION: Lyophilized from 0.2 µm filtered solution in 50 mM Tris, 100 mM Glycine, 25 mM Arginine, 150 mM NaCl, pH 7.5 with 10% Trehalose as protectant.

STORAGE CONDITIONS: Store at -20 °C. After reconstitution, aliquot and store at -20 °C and use within 3 months. Avoid repeated freeze-thaw cycles.

RECONSTITUTION: Centrifuge the vial prior to opening. Reconstitute in sterile deionized water with gentle shaking. Do not vortex.

DESCRIPTION: Leptin receptor (LEPR), also known as LEP-R, cluster of differentiation 295 (CD295), OB-R and B219, is a single-transmembrane-domain receptor of the gp130 family of cytokine receptors. Leptin receptor exists as homodimer and binds Leptin with high affinity, thus mediates the biological function of the adipocyte-specific hormone Leptin. LEPR is a receptor for leptin (an adipocyte-specific hormone that regulates body weight), and is involved in the regulation of fat metabolism, as well as in a novel hematopoietic pathway that is required for normal lymphopoiesis. Mutations in this protein have been associated with obesity and pituitary dysfunction. Interaction of leptin and leptin receptor is crucial for body weight and bone mass regulation in mammals through hypothalamic effects on satiety and energy expenditure. Meanwhile, research data

supports a leptin receptor activation model based on ligand-induced conformational changes.



RELATED PRODUCTS:

- Human CellExp™ CD223, human recombinant (Cat. No. 7278-10, -50)
- Human CellExp™ CD71, human recombinant (Cat. No. 7279-10, -50)
- Human CellExp™ CD273, human recombinant (Cat. No. 7369-10, -50)
- Human CellExp™ CD33, human recombinant (Cat. No. 7370-10, -50)
- Human CellExp™ CD36, human recombinant (Cat. No. 7371-10, -50)
- Human CellExp™ CD87, human recombinant (Cat. No. 7372-20, -100)
- Human CellExp™ CD360, human recombinant (Cat. No. 7373-20, -100)
- Human CellExp™ CD244, human recombinant (Cat. No. 7374-10, -50)

FOR RESEARCH USE ONLY! Not to be used in humans.