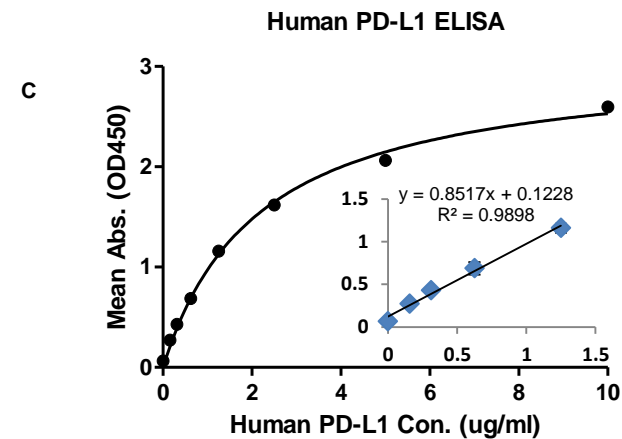
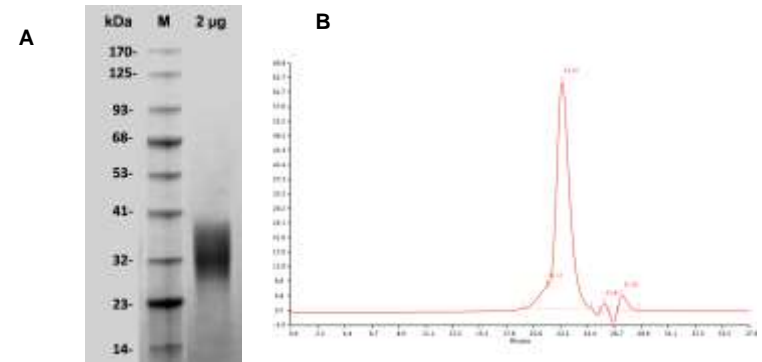


# Human CellExp™ PD1 / PDCD1, Human Recombinant

|                             |                                                                                                                                                                                                                                                                                                                                                                                                                                                                                                                                                                    |        |
|-----------------------------|--------------------------------------------------------------------------------------------------------------------------------------------------------------------------------------------------------------------------------------------------------------------------------------------------------------------------------------------------------------------------------------------------------------------------------------------------------------------------------------------------------------------------------------------------------------------|--------|
| <b>CATALOG NO:</b>          | 7498-10                                                                                                                                                                                                                                                                                                                                                                                                                                                                                                                                                            | 10 µg  |
|                             | 7498-50                                                                                                                                                                                                                                                                                                                                                                                                                                                                                                                                                            | 50 µg  |
|                             | 7498-250                                                                                                                                                                                                                                                                                                                                                                                                                                                                                                                                                           | 250 µg |
|                             | 7498-1000                                                                                                                                                                                                                                                                                                                                                                                                                                                                                                                                                          | 1 mg   |
| <b>ALTERNATE NAMES:</b>     | PD1, PDCD1, CD279, SLEB2, hPD-1, hPD-I, hSLE1                                                                                                                                                                                                                                                                                                                                                                                                                                                                                                                      |        |
| <b>SOURCE:</b>              | HEK 293 cells (Leu 25 - Gln 167)                                                                                                                                                                                                                                                                                                                                                                                                                                                                                                                                   |        |
| <b>PURITY:</b>              | > 95% by SDS-PAGE; > 90% by SEC-HPLC                                                                                                                                                                                                                                                                                                                                                                                                                                                                                                                               |        |
| <b>MOL. WEIGHT:</b>         | This protein is fused with polyhistidine tag at the C-terminus and has a calculated MW of 17.2 kDa (25-167aa). Under reducing conditions the protein migrates as ~25-40 kDa bands in SDS-PAGE due to glycosylation.                                                                                                                                                                                                                                                                                                                                                |        |
| <b>FORM:</b>                | Lyophilized                                                                                                                                                                                                                                                                                                                                                                                                                                                                                                                                                        |        |
| <b>FORMULATION:</b>         | Lyophilized from 0.22 µm filtered solution in PBS pH 7.4                                                                                                                                                                                                                                                                                                                                                                                                                                                                                                           |        |
| <b>STORAGE CONDITIONS:</b>  | Store at -20°C. After reconstitution, aliquot and store at -80°C. Avoid repeated freezing and thawing cycles.                                                                                                                                                                                                                                                                                                                                                                                                                                                      |        |
| <b>RECONSTITUTION:</b>      | Centrifuge the vial prior to opening. Reconstitute in sterile deionized water.                                                                                                                                                                                                                                                                                                                                                                                                                                                                                     |        |
| <b>DESCRIPTION:</b>         | Programmed cell death 1 (PD1) is a cell surface membrane protein of the immunoglobulin superfamily. It is expressed on the surface of activated T cells, B cells, macrophages, myeloid cells and a subset of thymocytes. PD1 functions as an inhibitory cell surface receptor which is involved in the regulation of T-cell function during immunity and tolerance. It is also a possible cell death inducer in association with other factors. Monoclonal antibodies targeting PD-1 that boost the immune system are being developed for the treatment of cancer. |        |
| <b>BIOLOGICAL ACTIVITY:</b> | Measured by its binding ability in a functional ELISA. Immobilized Human PD-1, His Tag at 5µg/mL (100 µL/well) can bind Human PD-L1, His Tag with a linear range of 0.15-1.25 µg/mL                                                                                                                                                                                                                                                                                                                                                                                |        |

**FOR RESEARCH USE ONLY! Not to be used on humans.**



**Fig A. SDS-PAGE (4-20%) of Recombinant Human PD-1:** 2 µg Human PD-1 recombinant protein loaded under reducing conditions and stained with Coomassie Blue.

**Fig B. SEC-HPLC:** Human PD-1 protein sample analyzed using Superose 6 Increase™ 5x150 column in 50 mM sodium phosphate; 0.3 M NaCl pH 7.2 at 100 µl/min and monitored at 280 nm.

**Fig C. Biological activity:** Immobilized Human PD-1, His Tag at 5µg/mL (100 µL/well) can bind Human PD-L1, His Tag with a linear range of 0.15-1.25 µg/mL.

**RELATED PRODUCT:**

- Human CellExp™ PD-1 /PDCD1, mouse recombinant (Cat. No. 7499)
- Human CellExp™ PD-1 /PDCD1, C-Fc Tag, human recombinant (Cat. No. 7500)
- Human CellExp™ PD-1 /PDCD1, C-Fc Tag, mouse recombinant (Cat. No. 7501)
- PD-1/PDCD1 Antibody (Cat. No. 6931-50)
- Human CellExp™ PD-L1 /CD274, human recombinant (Cat. No. 7429)

