

Human CellExp™ KLK-7 / Kallikrein-7, human recombinant

CATALOG #:	7510-10	10 µg
ALTERNATE NAMES:	KLK7, Kallikrein-7, PRSS6, SCCE, hK7, hSCCE	
SOURCE:	HEK 293 cells (Glu 23 – Arg 253)	
PURITY:	≥ 95% by SDS-PAGE gel	
MOL. WEIGHT:	This protein is fused with polyhistidine tag at the C-terminus, and has a calculated MW of 26.1 kDa. The predicted N-terminus is Glu 23. DTT-reduced Protein migrates as 29-33 kDa in SDS-PAGE due to glycosylation.	
ENDOTOXIN LEVEL:	< 1.0 EU per µg of the rhKLK-7 by the LAL method.	
FORM:	Lyophilized	
FORMULATION:	Lyophilized from 0.22 µm filtered solution in 50 mM Tris, 150 mM NaCl, pH 7.5. Normally Mannitol or Trehalose are added as protectants before lyophilization.	

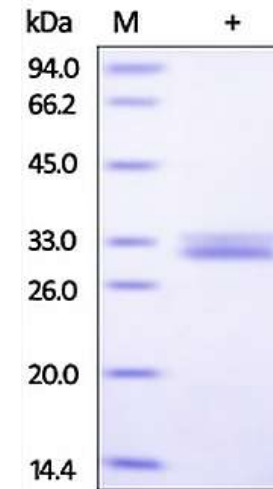
STORAGE CONDITIONS: Store at -20°C. After reconstitution, aliquot and store at -20°C or -70°C for up to 3 months. Avoid repeated freezing and thawing cycles. No activity loss was observed after storage in lyophilized state for 1 year (4°C) and after reconstitution under sterile conditions for 3 months (-70°C).

RECONSTITUTION: Centrifuge the vial prior to opening. Reconstitute in PBS, pH 7.4. Do not vortex.

DESCRIPTION: Kallikrein-7 (KLK7) is also known as kallikrein-related peptidase 7, Stratum corneum chymotryptic enzyme, Serine protease 6, KLK7, and PRSS6, is a secreted protein which belongs to the peptidase S1 family and Kallikrein subfamily. KLK7 is secreted as an inactive zymogen in the stratum granulosum layer of the epidermis, requiring proteolytic cleavage of the short N-terminal pro-region to liberate activated enzyme. This may be performed by KLK5 or matriptase, which are in vitro activators of KLK7. Once active, KLK7 is able to cleave desmocollin and corneodesmosin. KLK7 activity is regulated by a number of endogenous protein inhibitors including LEKTI, SPINK6, elafin and alpha-2-Macroglobulin-like

linked to several skin disorders, and overexpression of KLK7 may provide a route for metastasis in several cancers.

BIOLOGICAL ACTIVITY: Measured by its ability to cleave the fluorogenic peptide substrate, Mca-RPKPVE-Nval-WRK (Dnp) NH₂. The specific activity is >130 pmoles / min / µg.



Human recombinant KLK7 / Kallikrein 7. The purity of rhKallikrein-7 /KLK7 was determined by DTT-reduced (+) SDS-PAGE and staining overnight with Coomassie Blue.

RELATED PRODUCTS:

- Human CellExp™ Kallikrein-13, human recombinant (**Cat. No. 7413-10**)
- Human CellExp™ Kallikrein-1, human recombinant (**Cat. No. 7414-10**)
- Human CellExp™ Kallikrein-3, human recombinant (**Cat. No. 7415-10**)
- Human CellExp™ Kallikrein-4, human recombinant (**Cat. No. 7416-10**)
- Human CellExp™ Kallikrein-11, human recombinant (**Cat. No. 7417-10**)
- Human CellExp™ Kallikrein-8, human recombinant (**Cat. No. 7511-10**)
- Kallikrein, Human Plasma (**Cat # 4093-50**)
- KLK3 (Kallikrein-3), human recombinant (**Cat # 4727-20, -100, -1000**)
- Kallikrein 12 (KLK12) Antibody (**Cat # 3720-100**)
- Kallikrein 12 (KLK12) Blocking Peptide (**Cat # 3720BP-50**)

FOR RESEARCH USE ONLY! Not to be used in humans.