

Human CellExp™ Serpin E2 / PN1, human recombinant

CATALOG #:	7515-10	10 µg
ALTERNATE NAMES:	SERPINE2, Glia-derived nexin, GDN, Peptidase inhibitor 7, PI-7, Protease nexin 1, PN-1, Serpin E2, SerpinE2, PI7	
SOURCE:	HEK 293 cells (Ser 20 – Pro 397)	
PURITY:	≥ 92% by SDS-PAGE gel	
MOL. WEIGHT:	This protein is fused with a polyhistidine tag at the C-terminus, and has a calculated MW of 42.7 kDa. The predicted N-terminus is Ser 20. DTT-reduced Protein migrates as 45-48 kDa in SDS-PAGE due to glycosylation.	
ENDOTOXIN LEVEL:	< 1.0 EU per µg of the rhKLK-8 by the LAL method.	
FORM:	Lyophilized	

FORMULATION: Lyophilized from 0.22 µm filtered solution in 20 mM NaAc, 100 mM NaCl, pH 6.5. Normally Mannitol or Trehalose are added as protectants before lyophilization.

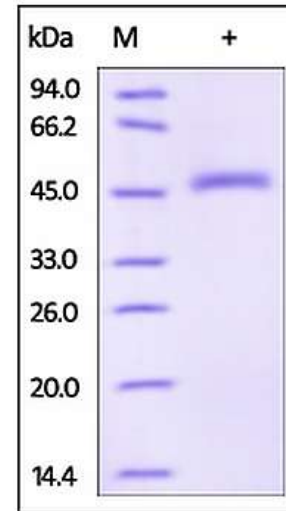
STORAGE CONDITIONS: Store at -20°C. After reconstitution, aliquot and store at -20°C or -70°C for up to 3 months. Avoid repeated freezing and thawing cycles. No activity loss was observed after storage in lyophilized state for 1 year (4°C) and after reconstitution under sterile conditions for 3 months (-70°C).

RECONSTITUTION: Centrifuge the vial prior to opening. Reconstitute in PBS, pH 7.4. Do not vortex.

DESCRIPTION: SERPINE2 is also known as Glia-derived nexin (GDN), Peptidase inhibitor 7 (PI7), Protease nexin 1 (PN1). SERPINE2 is a secreted glycoprotein which belongs to the serpin family. SerpinE1 is the primary physiological inhibitor of the two plasminogen activators urokinase (uPA) and tissue plasminogen activator (tPA). PAI-1 / GDN is also implicated in adipose tissue development. It suggests that PAI-1 inhibitors serve in the control of atherothrombosis. Defects in Serpin E1 / PN1 are the cause of plasminogen activator

inhibitor-1 deficiency (PAI-1 deficiency) which is characterized by abnormal bleeding due to SerpinE1 defect in the plasma.

BIOLOGICAL ACTIVITY: Measured by its ability to inhibit trypsin cleavage of a fluorogenic peptide substrate, Mca - RPKPVE - Nval – WRK (Dnp) - NH₂.



Human recombinant Serpin E2 / PN1. The purity of Serpin E2 / PN1 was determined by DTT-reduced (+) SDS-PAGE and staining overnight with Coomassie Blue.

RELATED PRODUCTS:

- Human CellExp™ SERPIN F1, human recombinant, **(Cat. No. 7418-10, -50)**
- Human CellExp™ SERPINA1 /A1AT, human recombinant, **(Cat. No. 7235-10)**
- Human CellExp™ SERPINA8, human recombinant, **(Cat. No. 7236-10)**
- Serpin E1/PAI-1, human recombinant, **(Cat. No. 4731-10, -100, -1000)**
- Serpin A6 Antibody **(Cat. No. 3906-100)**
- Serpin A6 Blocking Peptide **(Cat. No. 3906BP-100)**
- Neuroserpin, human recombinant, **(Cat. No. 7181-10, -50)**

FOR RESEARCH USE ONLY! Not to be used in humans.