

Human CellExp™ ENPP-2 / Autotaxin, human recombinant

CATALOG #:	7516-10	10 µg
ALTERNATE NAMES:	ENPP2, E-NPP 2, Autotaxin, LysoPLD, ATX, PDNP2, ATX-X, NPP2, PD-IALPHA	
SOURCE:	HEK 293 cells (Asp 49 – Ile 863)	
PURITY:	≥ 92% by SDS-PAGE gel	
MOL. WEIGHT:	This protein is fused with polyhistidine tag at the N-terminus, has a calculated MW of 94.5 kDa. The predicted N-terminus is Asp 49. DTT-reduced Protein migrates as 120-130 kDa due to glycosylation.	
ENDOTOXIN LEVEL:	< 1.0 EU per µg of the rhKLK-8 by the LAL method.	
FORM:	Lyophilized	

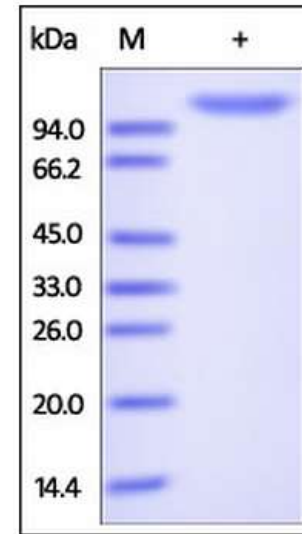
FORMULATION: Lyophilized from 0.22 µm filtered solution in 50 mM Tris, 150 mM NaCl, pH 7.5. Normally Mannitol or Trehalose are added as protectants before lyophilization.

STORAGE CONDITIONS: Store at -20°C. After reconstitution, aliquot and store at -20°C or -70°C for up to 3 months. Avoid repeated freezing and thawing cycles. No activity loss was observed after storage in lyophilized state for 1 year (4°C) and after reconstitution under sterile conditions for 3 months (-70°C).

RECONSTITUTION: Centrifuge the vial prior to opening. Reconstitute in PBS, pH 7.4. Do not vortex.

DESCRIPTION: Autotaxin also known as ectonucleotide pyrophosphatase / phosphodiesterase family member 2 (E-NPP 2 or ENPP2), Extracellular lysophospholipase D (LysoPLD), Autotaxin (ATX or ATX-X), which belongs to the nucleotide pyrophosphatase / phosphodiesterase family. ENPP2 contains two SMB (somatomedin-B) domains. ENPP2 hydrolyzes lysophospholipids to produce lysophosphatidic acid (LPA) in extracellular fluids. ENPP2 can act on sphingosylphosphorylcholine producing sphingosine-1-phosphate, a modulator of cell motility. ENPP2 stimulates migration of melanoma cells, probably via a pertussis toxin-sensitive G protein.

BIOLOGICAL ACTIVITY: Measured by its ability to cleave Bis (p-Nitrophenyl) Phosphate (BNPP). The specific activity is >8000 pmol/min/µg.



Human recombinant ENPP-2 / Autotaxin. The purity of ENPP-2 / Autotaxin was determined by DTT-reduced (+) SDS-PAGE and staining overnight with Coomassie Blue.

RELATED PRODUCTS:

- PPA1, human recombinant (**Cat. No. 7818-100**)
- PRPS1, human recombinant (**Cat. No. 7828-100**)

FOR RESEARCH USE ONLY! Not to be used in humans.